

PARCS

bene

FURNIER / VENEER

EICHE, NUSS / OAK, WALNUT



EY Eiche Sylt
oak sylt



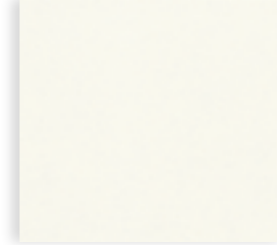
EV Eiche Vulcano
oak vulcano



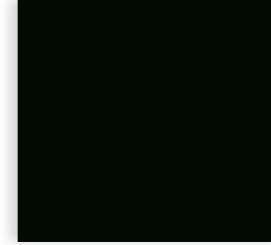
NF Amerik. Nuss
americian walnut

METALLOBERFLÄCHE / METAL SURFACE

PULVERBESCHICHTET / POWDER-COATED



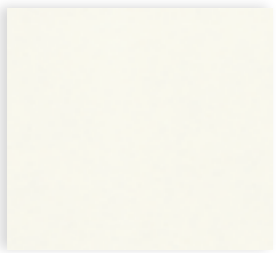
WI Weiß
white



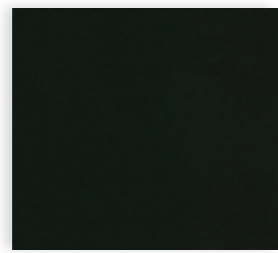
SZ Schwarz
black

LACKIERTE OBERFLÄCHEN / LACQUERED SURFACE

SCHRÄNKE, WÄNDE, TISCHPLATTEN / CABINETS, WALLS, DESK TOPS



WI Weiß
white



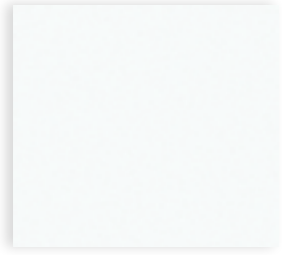
BS Basalt
basalt

ELOXIERT / ANODISED

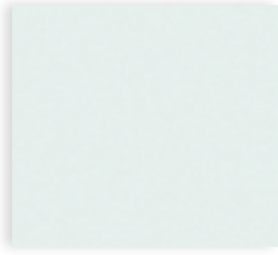


AL Aluminium
aluminium

GLAS / *GLASS*

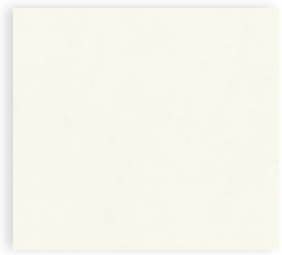


KS Klarglas
clear glass

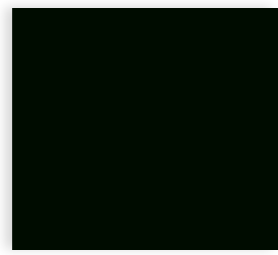


ST Satinato Weiß
satinato white

LACKIERTES GLAS / *LACQUERED GLASS*



DW Opak Weiß
opaque white



DS Opak Schwarz
opaque black

TEPPICH / *CARPET*

FORMA



T3 Natur
nature



T4 Anthrazit
anthracite

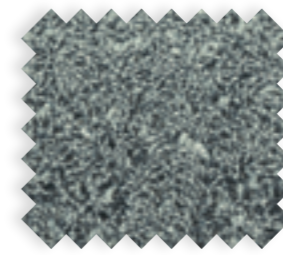


Q6 Schwarz
black

POODLE



Q7 Natur
nature



Q8 Schiefergrau
slate grey



Q9 Schwarz
black

LEDER / LEATHER

ENTRÉE



L1 Carmine



L1 Black



L1 Coffee

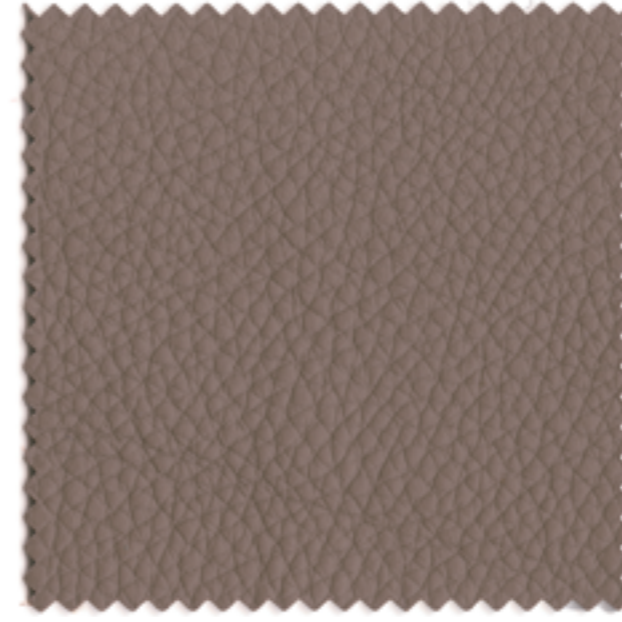


L1 Nature



L1 Ivory

ENTRÉE COLOR



L2 Taupe



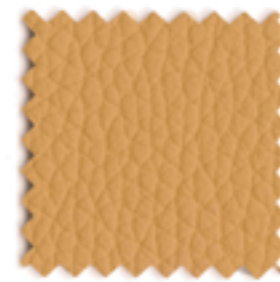
L2 Olive



L2 Alpine



L2 Elephant



L2 Safran



L2 Kiwi



L2 Moss



L2 Concrete



L2 Orange



L2 Bordeaux



L2 Cassis



L2 Cobalt

LEDER / *LEATHER*

SUPERIOR



L3 Taupe



L3 Basalt



L3 Mocca



L3 Sand



L3 Cognac



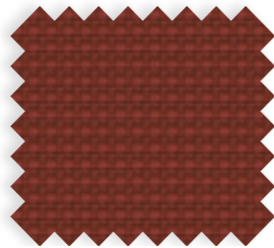
L3 Umbra

STOFF / FABRIC

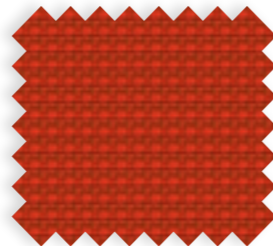
URBAN PLUS



YN 009



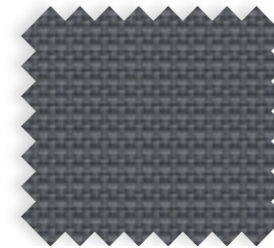
YN 027



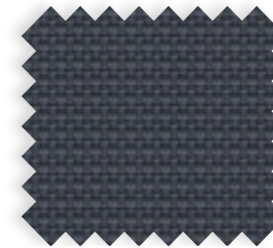
YN 076



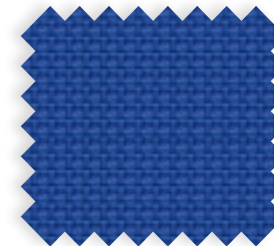
YN 205



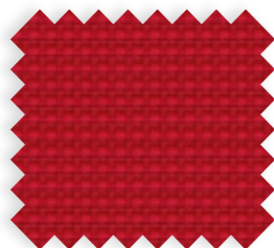
YN 206



YN 207



YN 208



YN 079



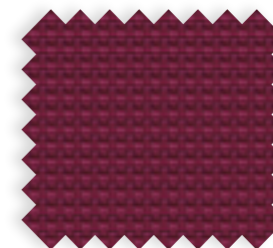
YN 082



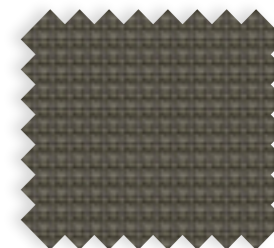
YN 209



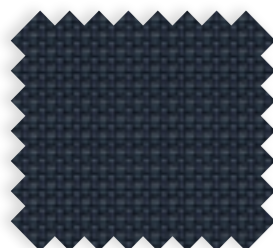
YN 210



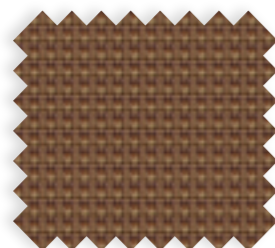
YN 211



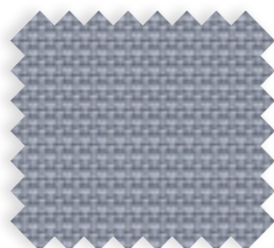
YN 212



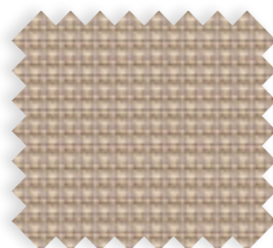
YN 083



YN 091



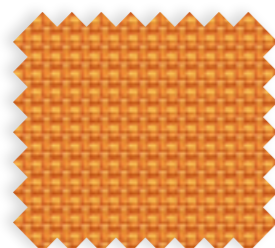
YN 094



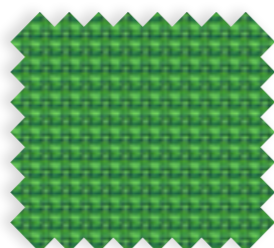
YN 108



YN 145



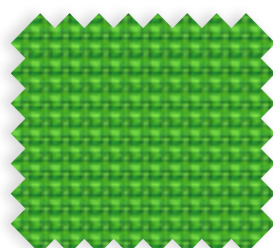
YN 148



YN 159



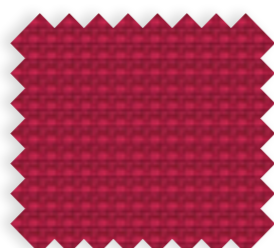
YN 160



YN 200



YN 202



YN 203



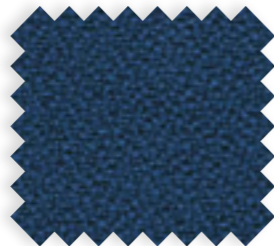
YN 204

STOFF / FABRIC

XTREME PLUS



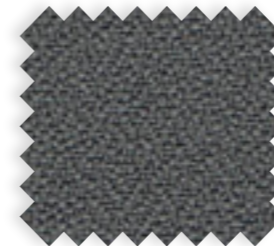
YS 004



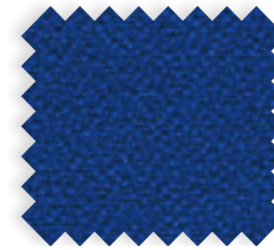
YS 005



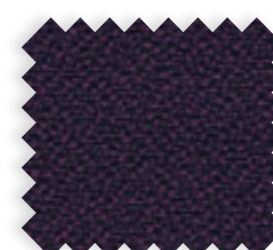
YS 009



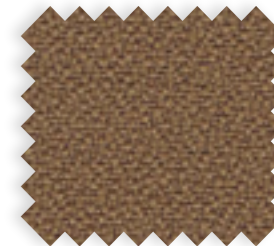
YS 081



YS 082



YS 084



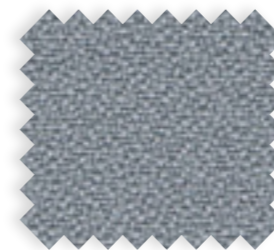
YS 091



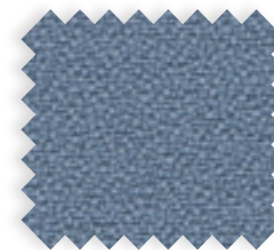
YS 024



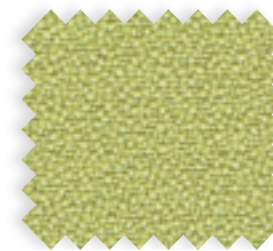
YS 026



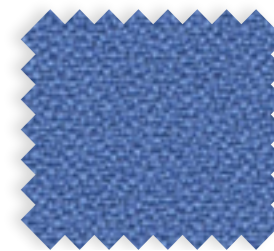
YS 094



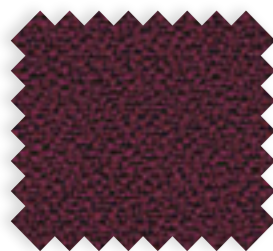
YS 095



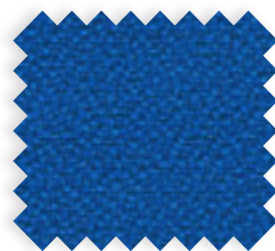
YS 096



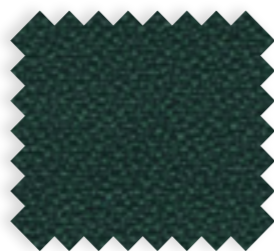
YS 097



YS 030



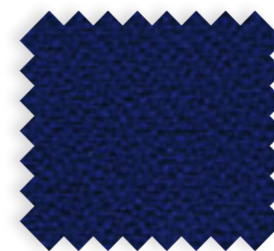
YS 035



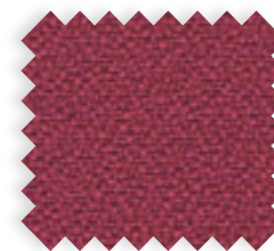
YS 045



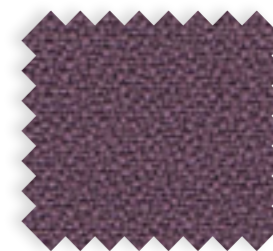
YS 046



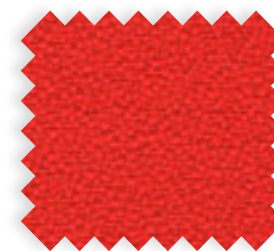
YS 100



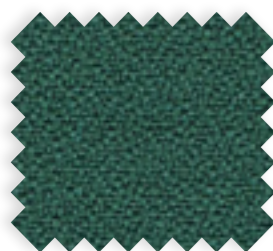
YS 101



YS 102



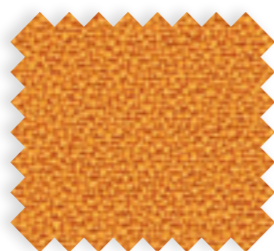
YS 105



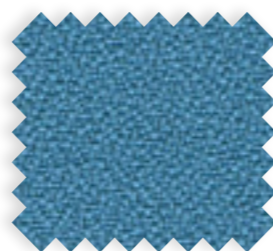
YS 047



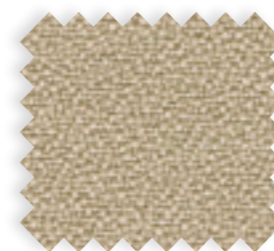
YS 071



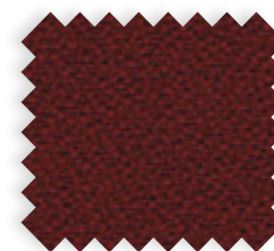
YS 072



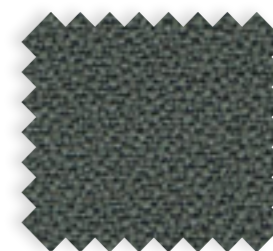
YS 073



YS 108



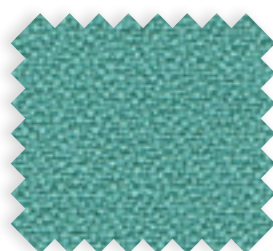
YS 136



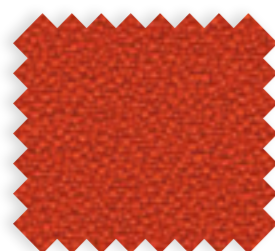
YS 141



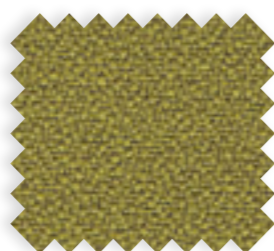
YS 145



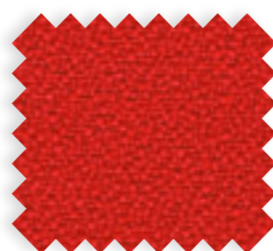
YS 074



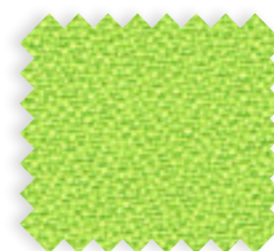
YS 076



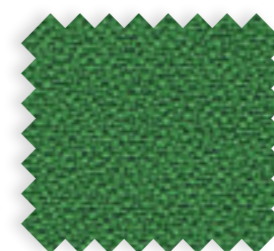
YS 077



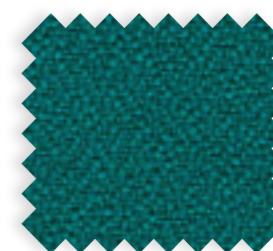
YS 079



YS 156



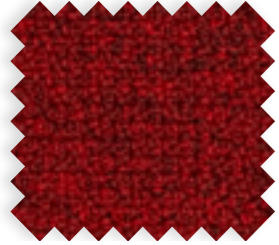
YS 159



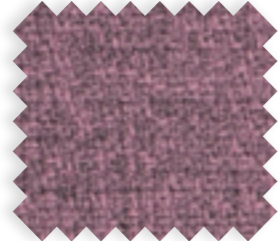
YS 160

STOFF / FABRIC

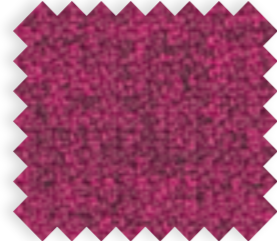
STEP & STEP MELANGE



2441/64179



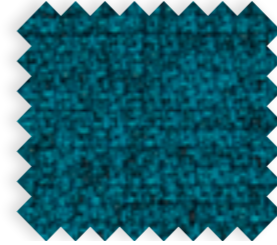
2441/64181



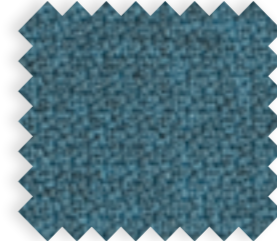
2441/64182



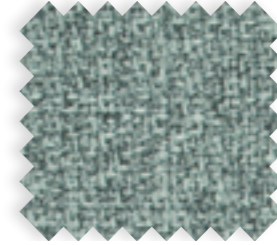
2441/65011



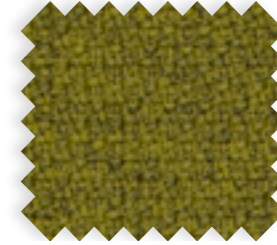
2441/67007



2441/67072



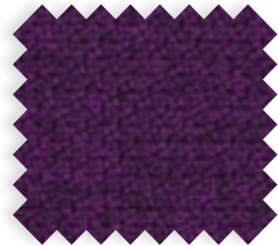
2441/67118



2441/67119



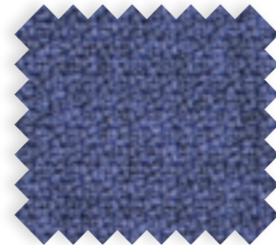
2441/65018



2441/65023



2441/65047



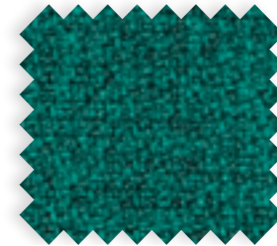
2441/65090



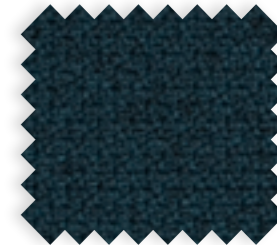
2441/67120



2441/67121



2441/67157



2441/67158



2441/65091



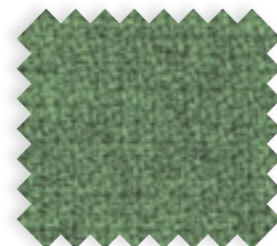
2441/65092



2441/65093



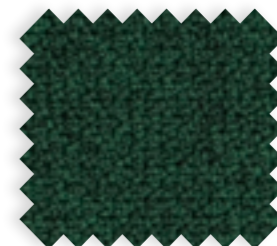
2441/65094



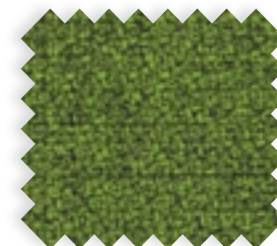
2441/67159



2441/67160



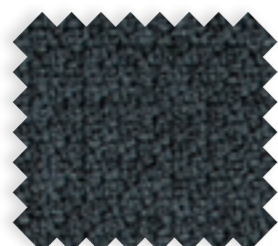
2441/67161



2441/67162



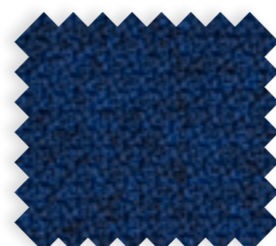
2441/66018



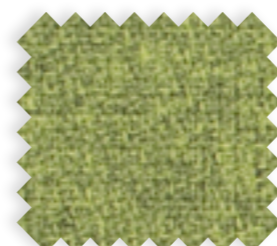
2441/66019



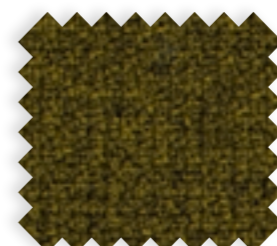
2441/66148



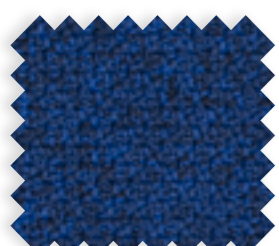
2441/66149



2441/67163



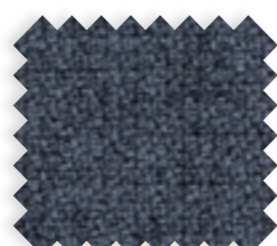
2441/67165



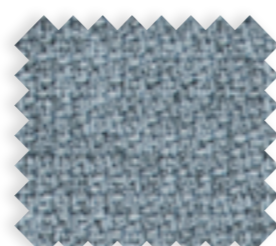
2441/66150



2441/66151



2441/66152



2441/67004

STOFF / FABRIC

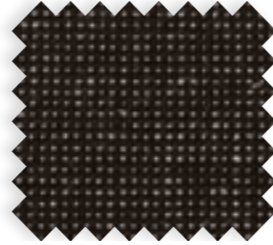
PATINA



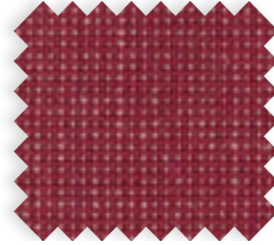
PAT01



PAT02



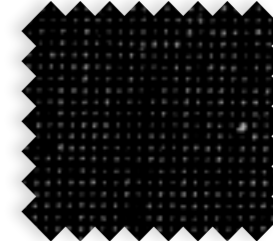
PAT03



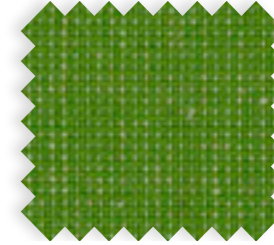
PAT18



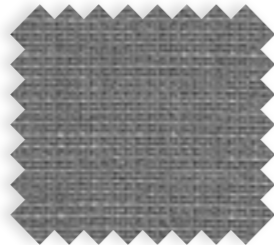
PAT19



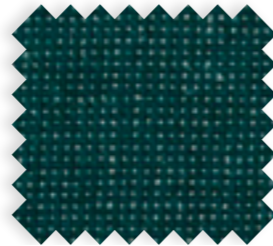
PAT20



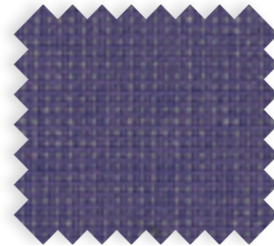
PAT21



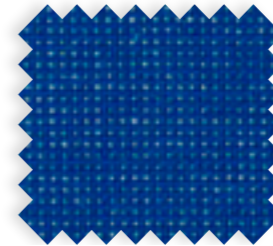
PAT04



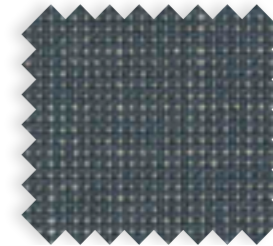
PAT05



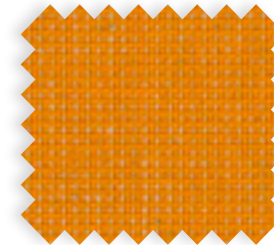
PAT22



PAT23



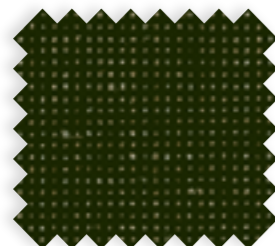
PAT24



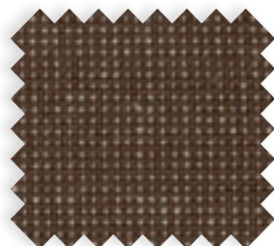
PAT25



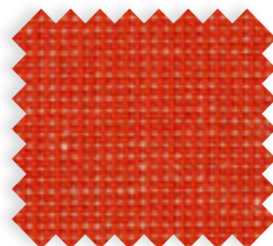
PAT06



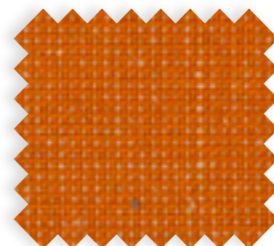
PAT07



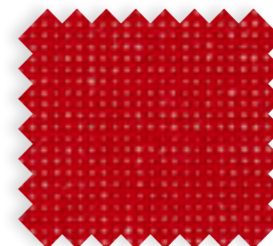
PAT08



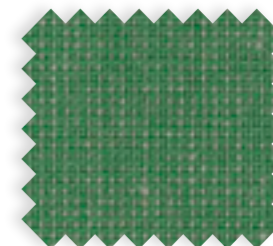
PAT09



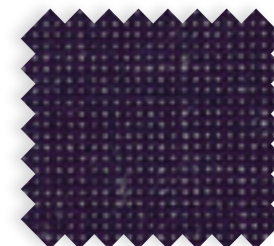
PAT26



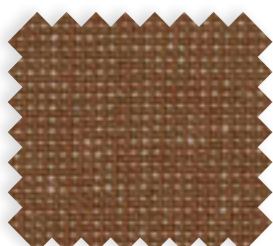
PAT27



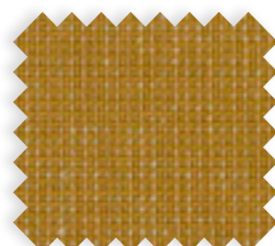
PAT28



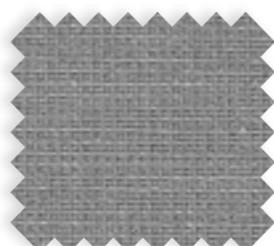
PAT29



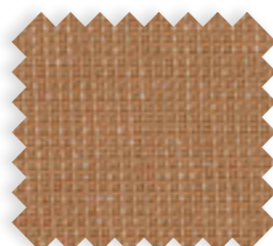
PAT10



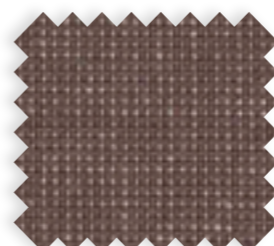
PAT11



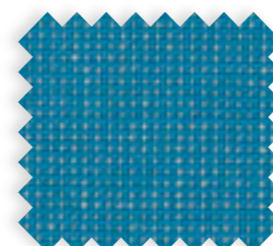
PAT12



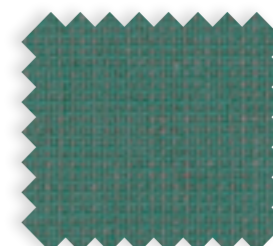
PAT13



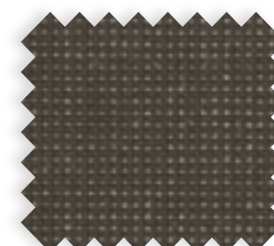
PAT30



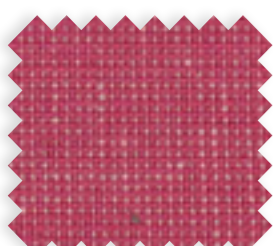
PAT31



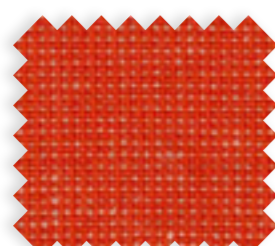
PAT32



PAT33



PAT14



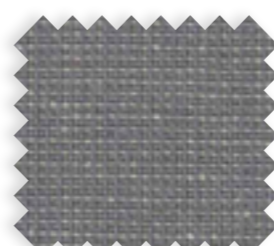
PAT15



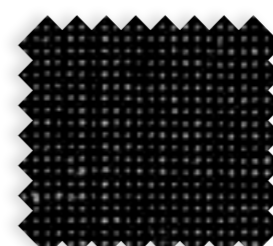
PAT16



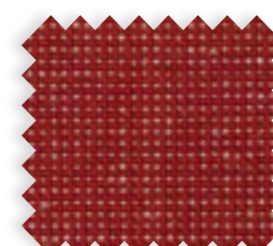
PAT17



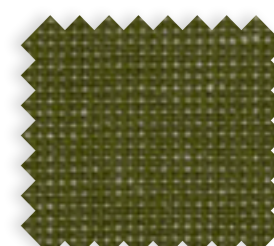
PAT34



PAT35



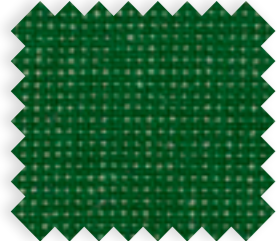
PAT36



PAT37

STOFF / *FABRIC*

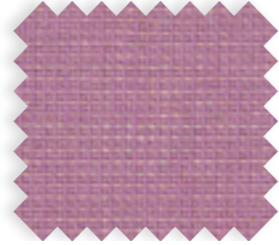
PATINA



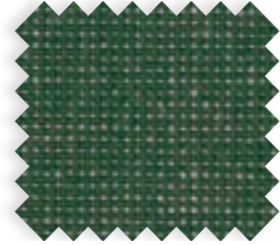
PAT38



PAT39



PAT40



PAT41



PAT42



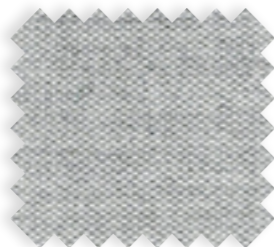
PAT43

STOFF / FABRIC

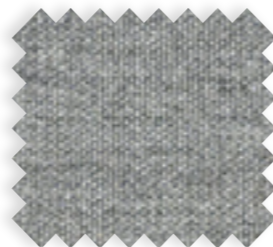
REMIX 2



113



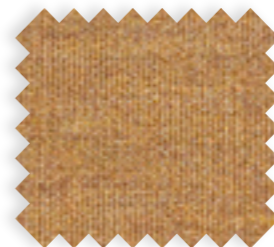
123



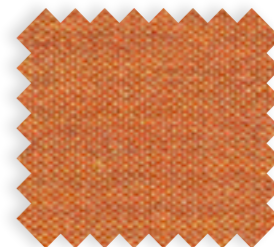
133



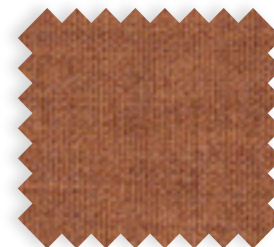
422



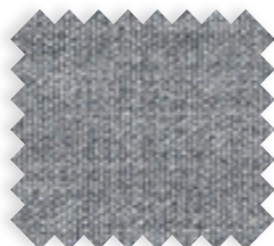
433



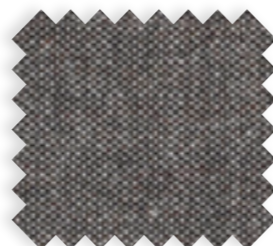
443



452



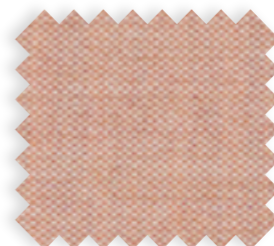
143



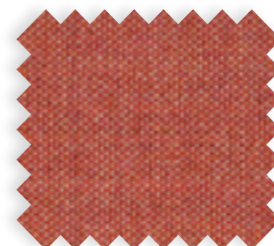
152



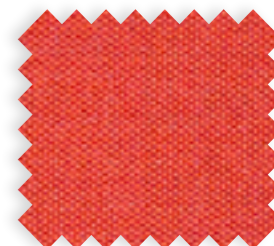
543



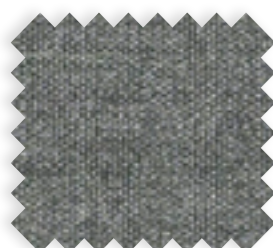
612



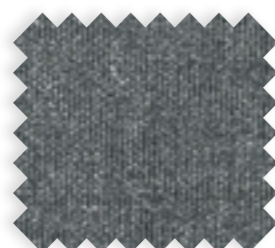
632



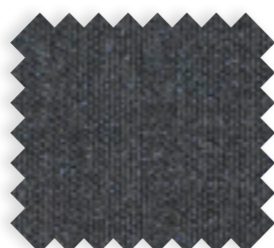
643



163



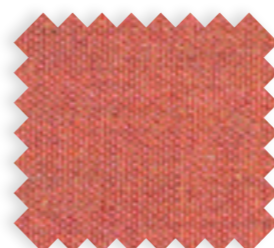
173



183



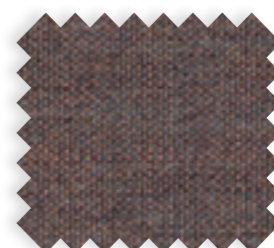
223



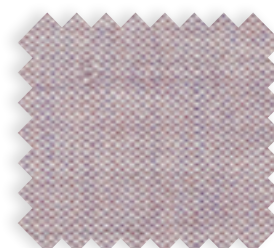
653



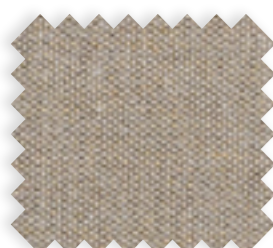
662



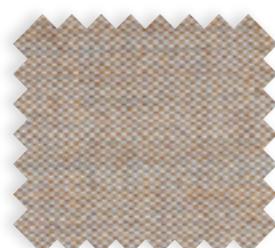
672



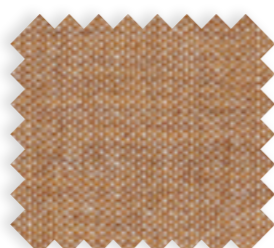
682



233



242



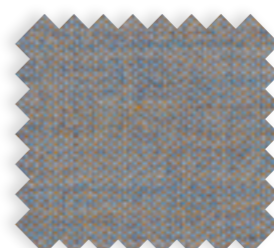
252



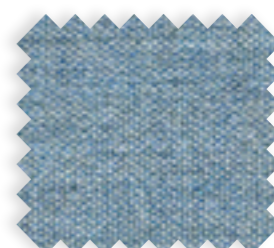
362



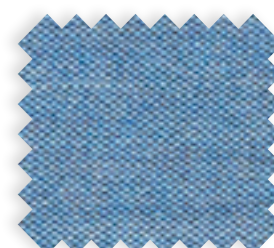
692



722



733



743



373



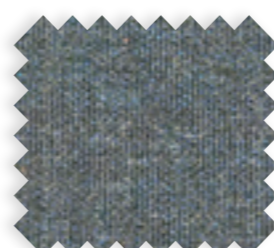
383



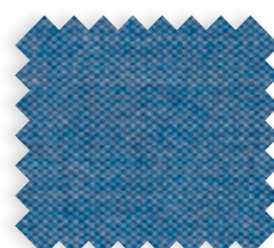
393



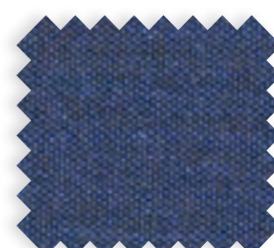
412



753



762



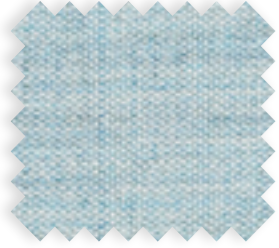
773



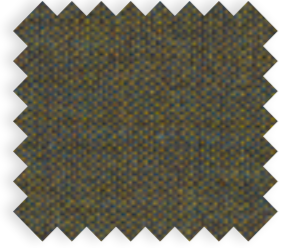
783

STOFF / FABRIC

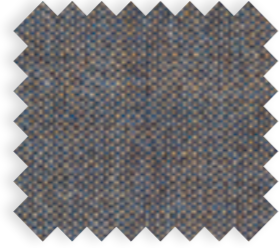
REMIX 2



823



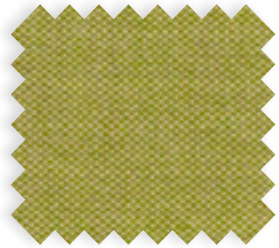
842



852



873



912



923



933



942



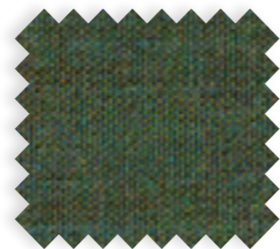
954



962



973



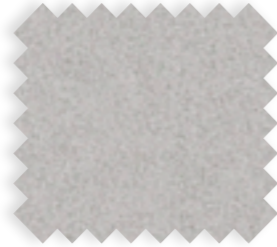
982

STOFF / FABRIC

EUROPOST



QW White



QP Platinum



QA Anthracite



61052



61107



61108



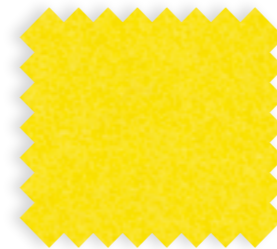
61109



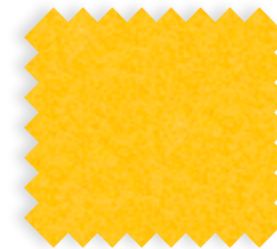
QZ Black



QK Coffee



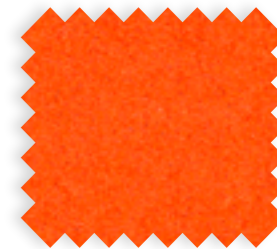
62060



62061



63004



63016



QG Fango



QL Clay



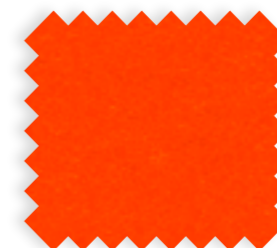
QH Fuchsia



QS Cassis



63070



63072



63073



64068



QU Aubergine



QM Carmine red



QY Cyan



QO Lime



64149



64150



65069



65070



QI Pistachio



60017



60051



60058



65071



65072



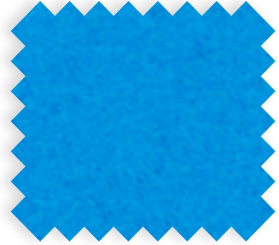
66039



66056

STOFF / FABRIC

EUROPOST



66115



66116



66117



66118



66119



67066



68003



68030



68126



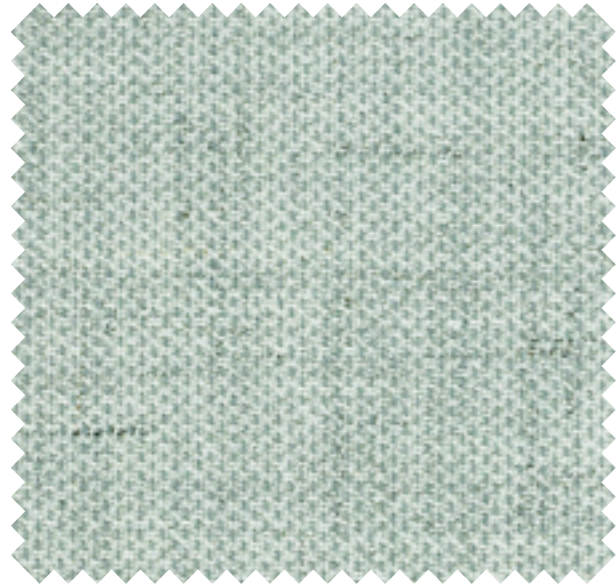
68127



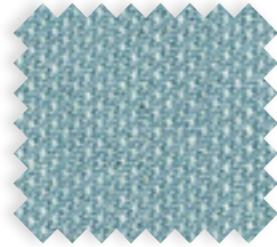
68128

STOFF / FABRIC

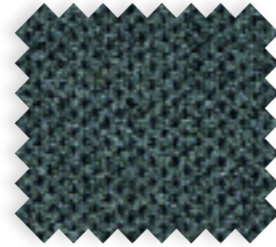
CLARA 2



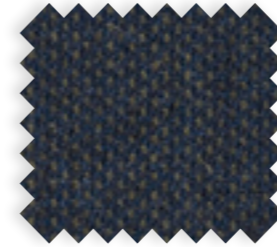
144



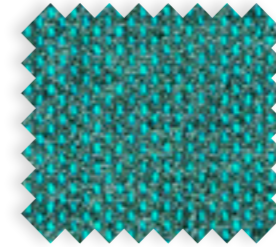
148



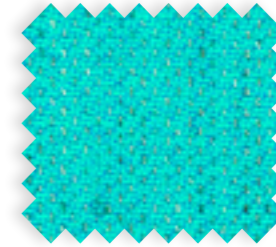
184



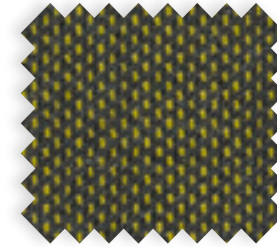
797



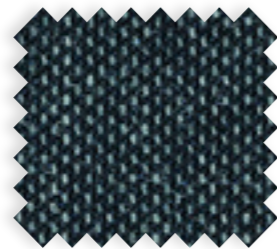
884



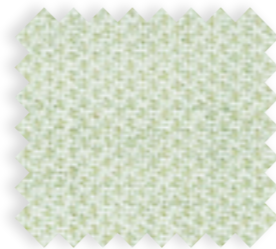
888



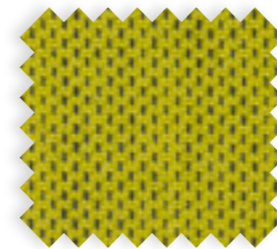
933



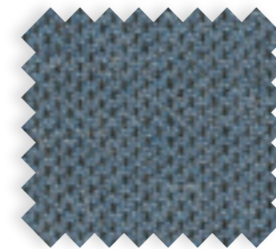
188



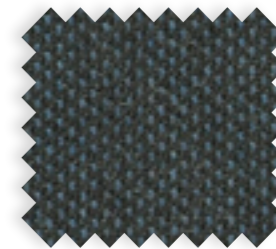
244



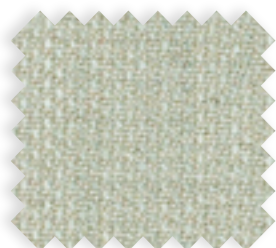
937



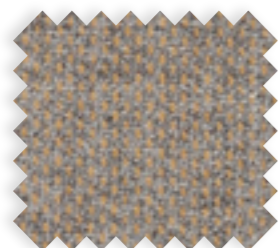
983



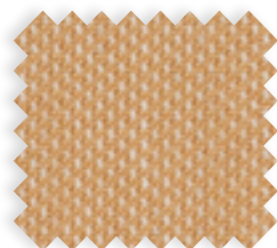
987



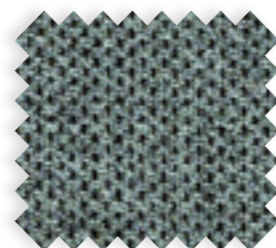
248



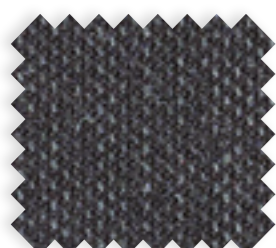
273



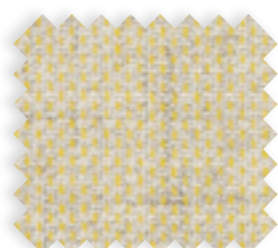
277



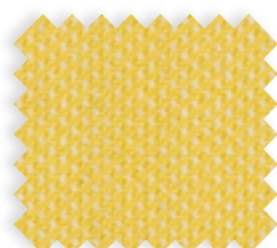
384



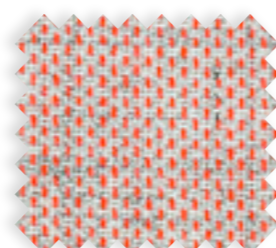
388



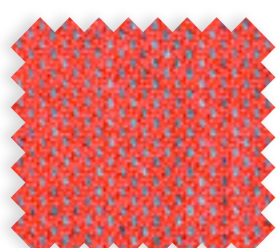
423



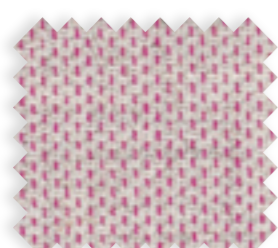
427



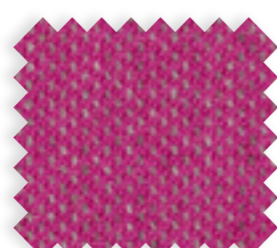
544



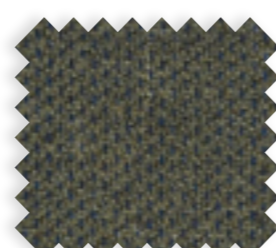
548



643



647



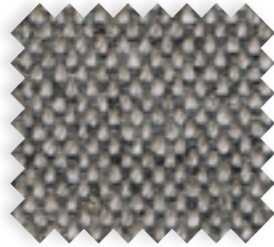
793

STOFF / FABRIC

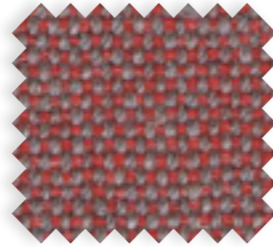
MAINLINE FLAX



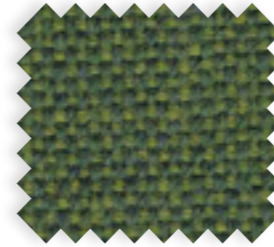
MLF01



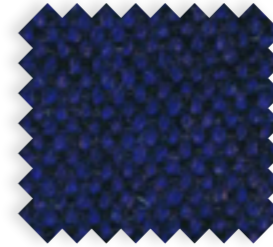
MLF02



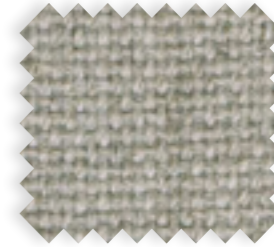
MLF03



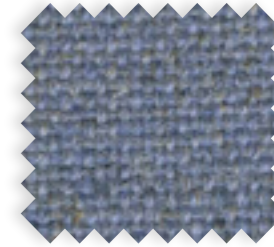
MLF18



MLF19



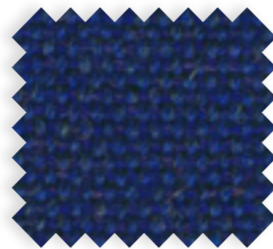
MLF20



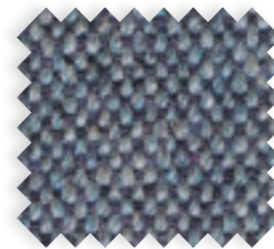
MLF21



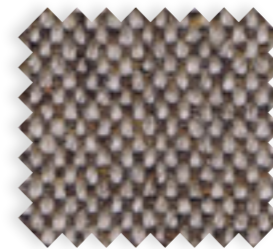
MLF04



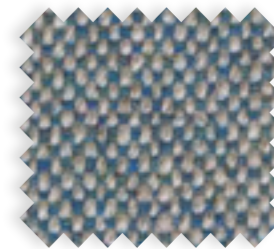
MLF05



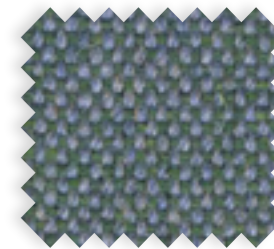
MLF22



MLF23



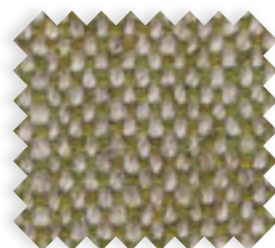
MLF24



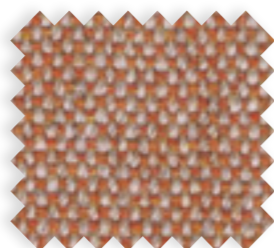
MLF25



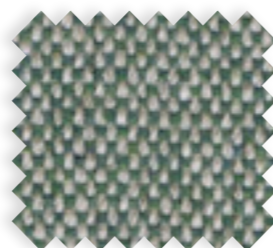
MLF06



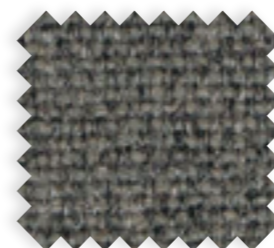
MLF07



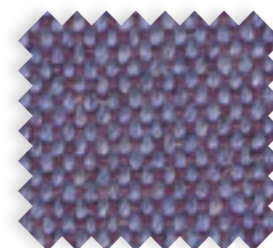
MLF08



MLF09



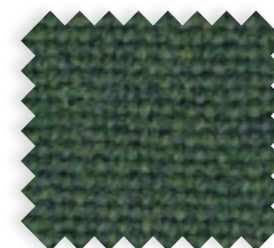
MLF26



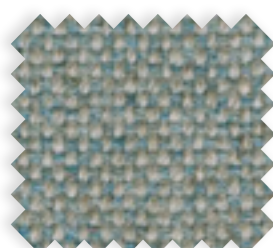
MLF27



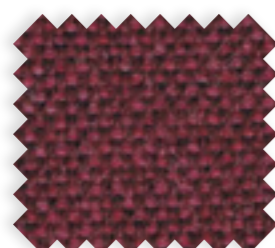
MLF28



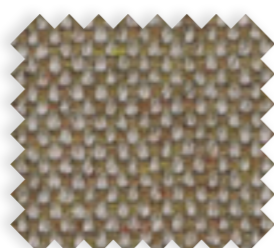
MLF29



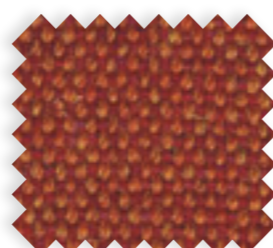
MLF10



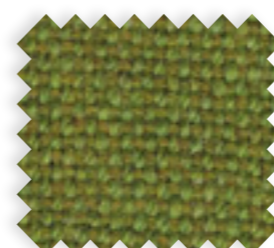
MLF11



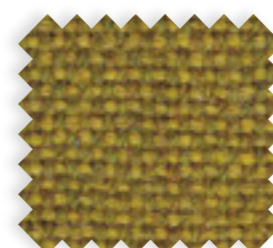
MLF12



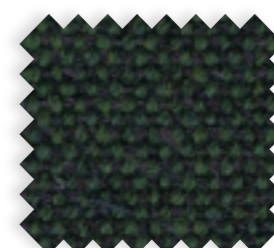
MLF13



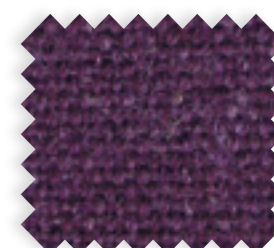
MLF30



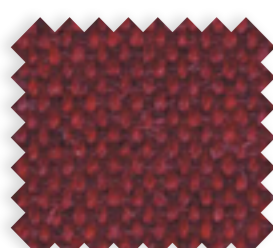
MLF31



MLF32



MLF33



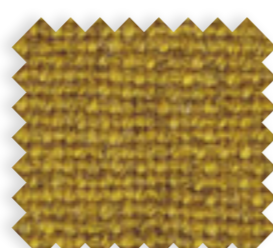
MLF14



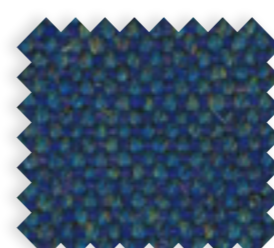
MLF15



MLF16



MLF17



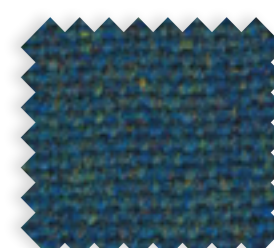
MLF34



MLF35



MLF36



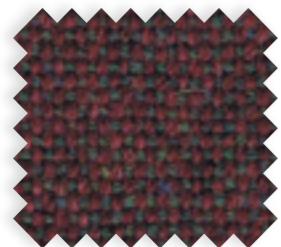
MLF37

STOFF / *FABRIC*

MAINLINE FLAX



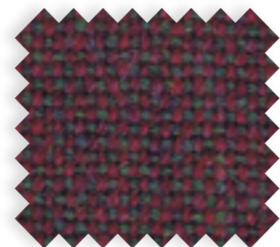
MLF38



MLF39



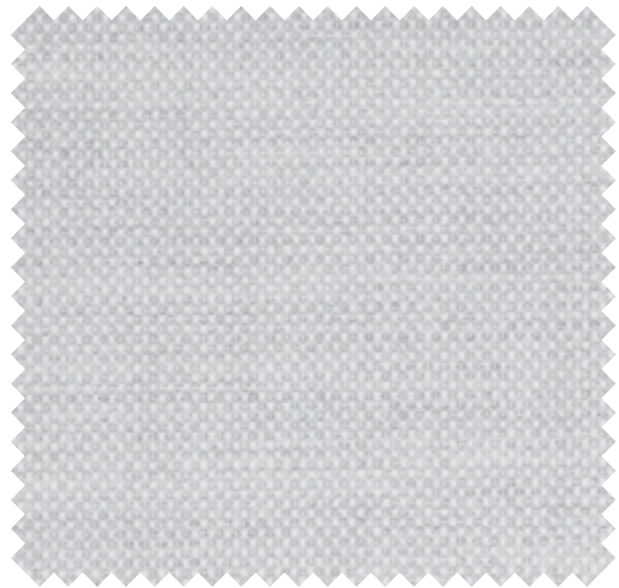
MLF40



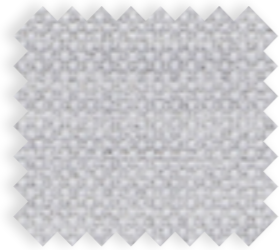
MLF41

STOFF / FABRIC

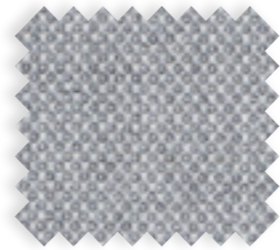
FIORD



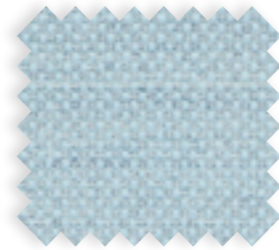
101



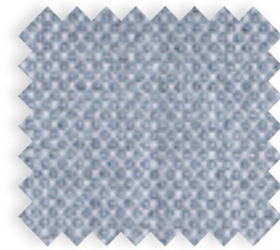
121



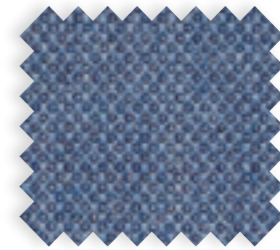
151



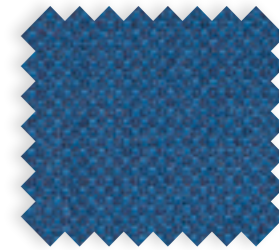
721



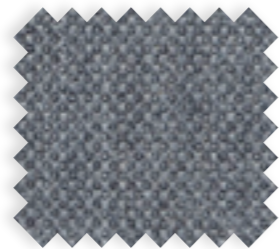
751



771



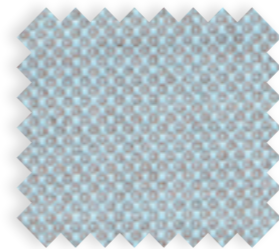
791



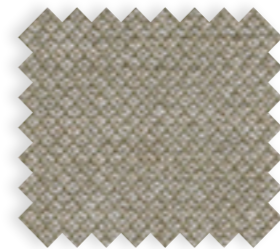
171



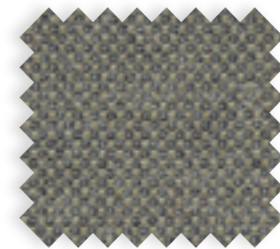
191



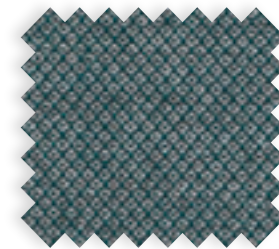
821



951



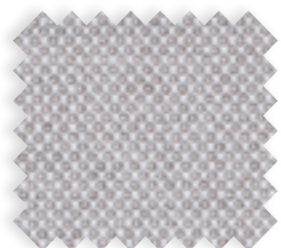
961



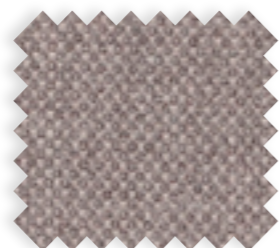
971



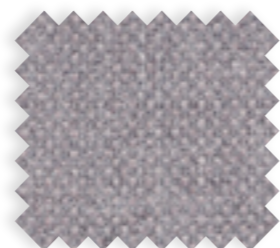
201



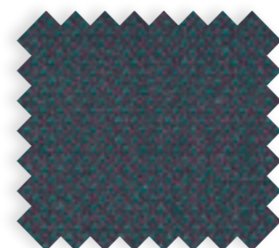
251



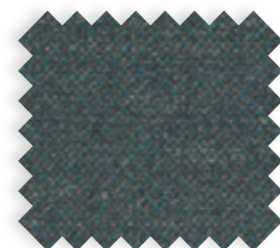
271



351



981



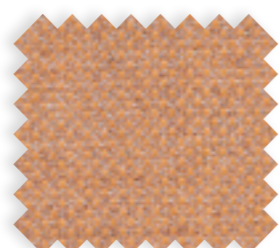
991



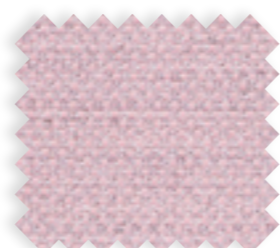
371



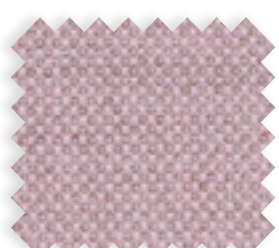
391



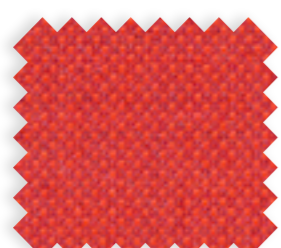
451



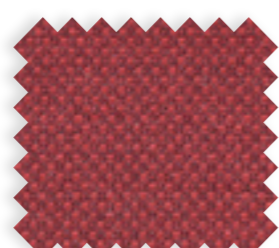
521



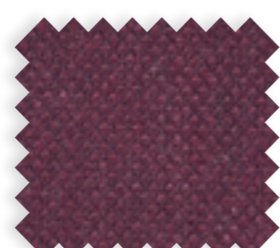
551



571



581



591

STOFF / FABRIC

DIVINA 3



106



154



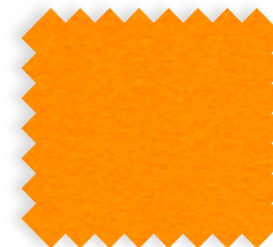
171



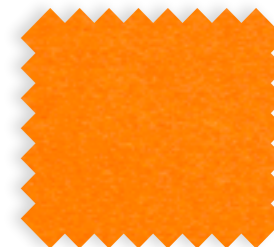
462



526



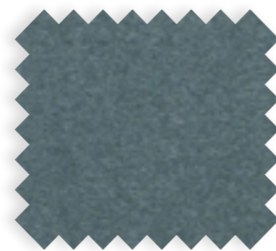
536



542



173



181



552



562



584



623



191



224



236



246



626



636



652



662



334



346



356



376



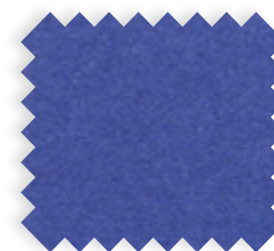
666



671



676



684



384



393



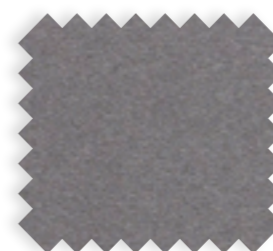
426



444



686



691



692



696

STOFF / FABRIC

DIVINA 3



712



742



756



782



791



793



826



836



846



856



876



886



893



922



936



944



956



966



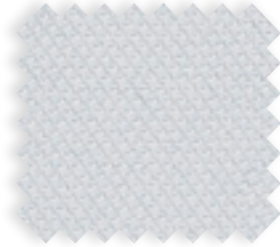
984

STOFF / FABRIC

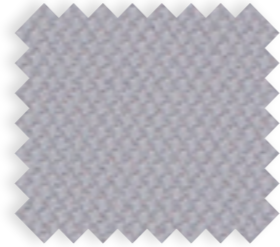
STEELCUT 2



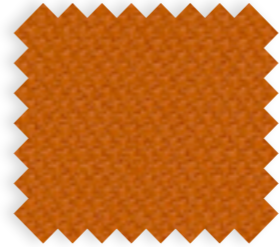
110



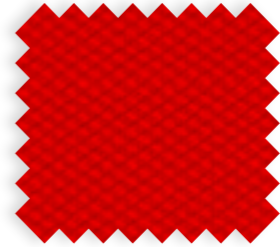
120



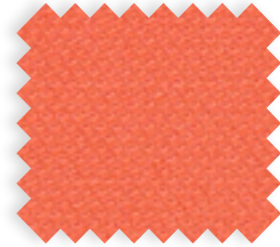
135



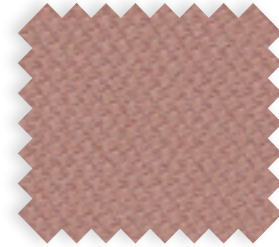
535



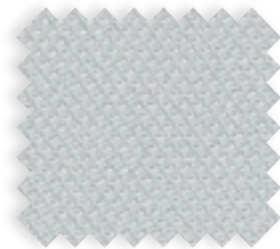
545



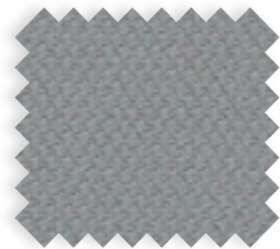
550



605



140



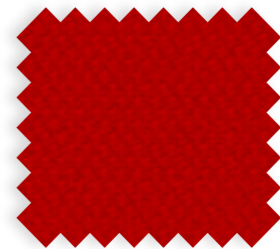
155



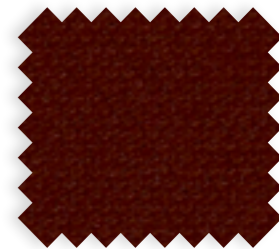
615



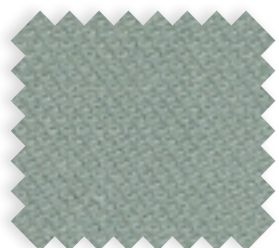
625



635



655



160



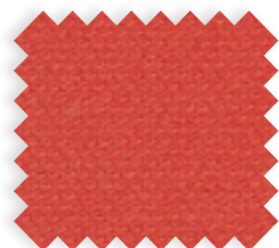
180



190



220



660



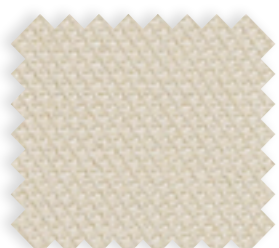
685



695



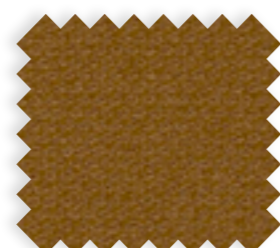
760



240



255



265



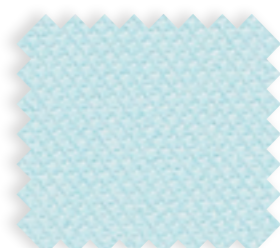
365



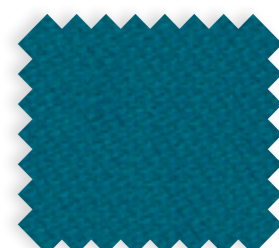
775



780



820



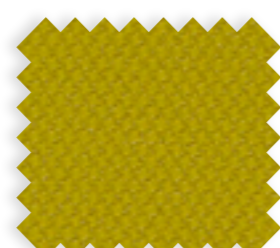
835



370



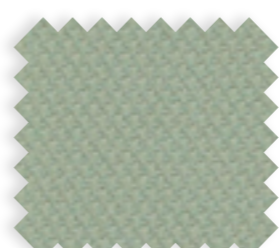
380



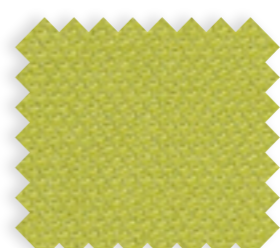
435



445



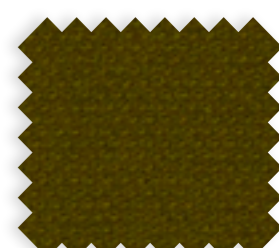
935



950



975



985

STOFF / FABRIC

STAMSKIN® TOP F 4340



COL. 20129/ORD. 56083*



COL. 07496/ORD. 56068*



COL. 07432/ORD. 56019



COL. 07422/ORD. 56009*



COL. 10120/ORD. 56029



COL. 07445/ORD. 56040



COL. 20127/ORD. 56080



COL. 07477/ORD. 56052



COL. 07476/ORD. 56051*



COL. 00002/ORD. 56024*



COL. 07478/ORD. 56053*



COL. 07479/ORD. 56054*



COL. 07480/ORD. 56056



COL. 10295/ORD. 56066



COL. 07485/ORD. 56048*

STOFF / FABRIC

MARVEL



MLR 01



MLR 02



MLR 03



MLR 04



MLR 05



MLR 06



MLR 07



MLR 08



MLR 09



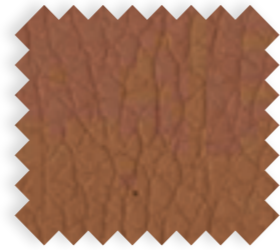
MLR 10



MLR 11



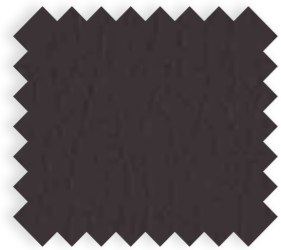
MLR 12



MLR 13



MLR 14



MLR 15



MLR 16



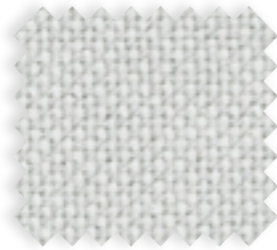
MLR 17

STOFF / FABRIC

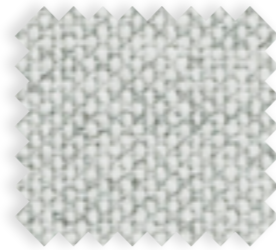
HALLINGDAL 65



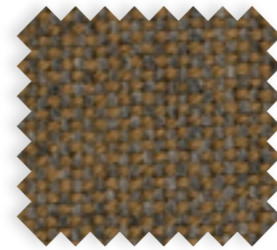
100



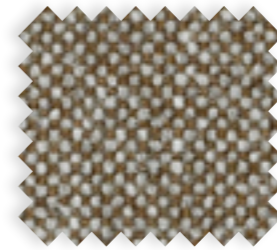
103



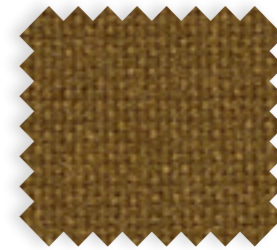
110



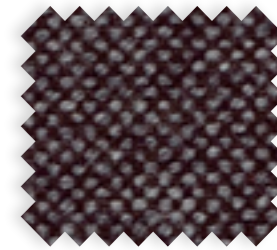
227



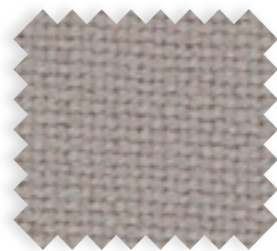
270



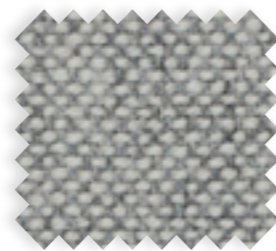
350



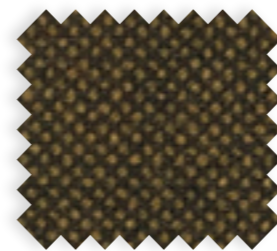
368



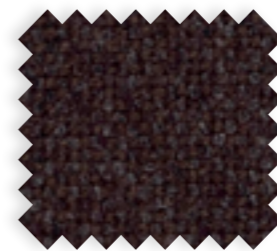
113



116



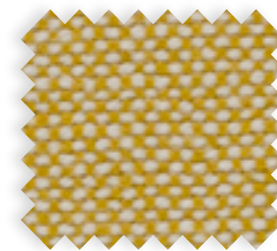
370



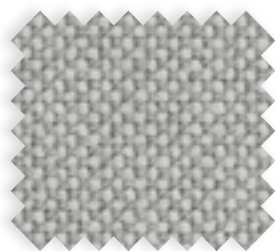
376



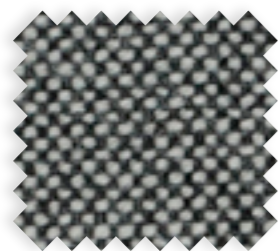
390



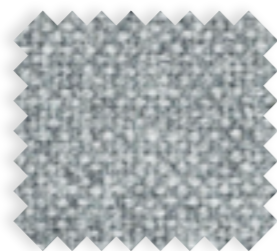
407



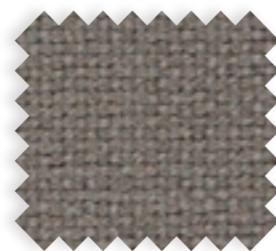
123



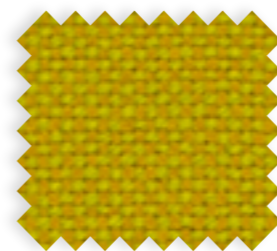
126



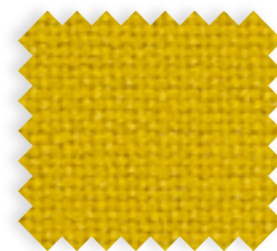
130



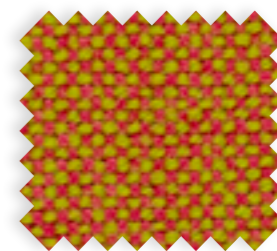
143



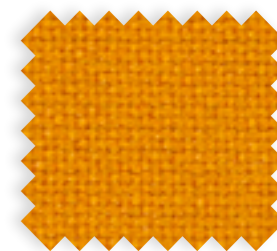
420



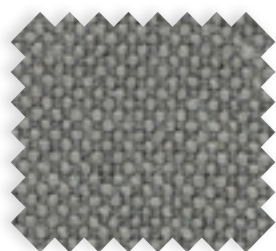
457



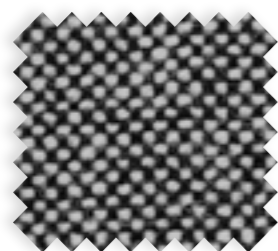
526



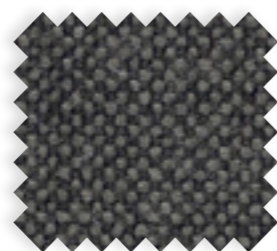
547



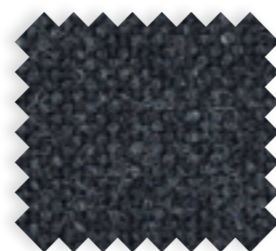
153



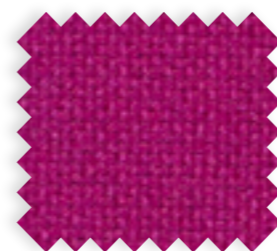
166



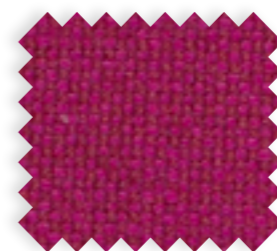
173



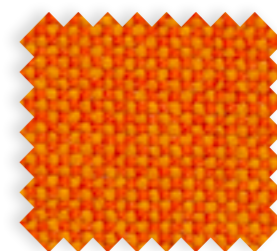
180



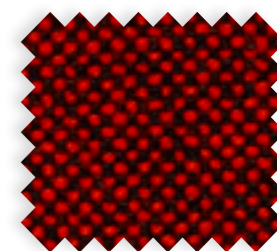
563



573



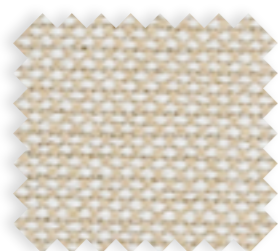
590



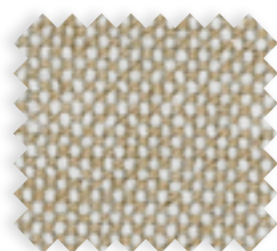
596



190



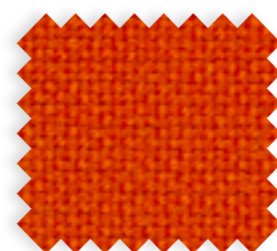
200



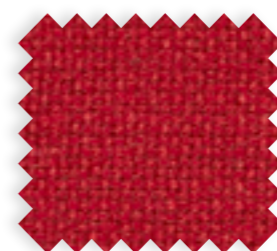
220



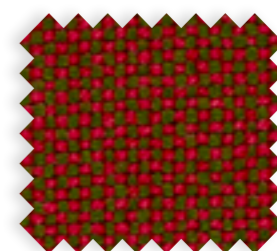
224



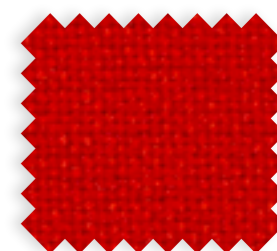
600



657



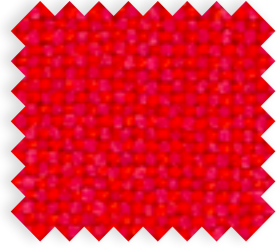
660



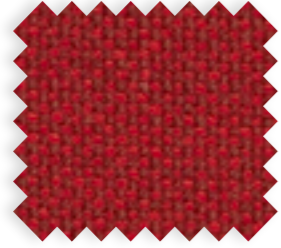
674

STOFF / FABRIC

HALLINGDAL 65



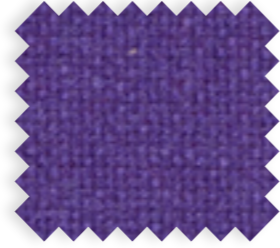
680



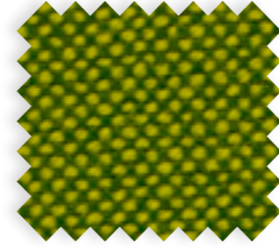
687



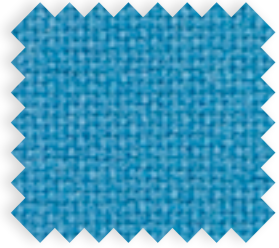
694



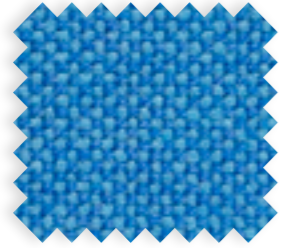
702



980



723



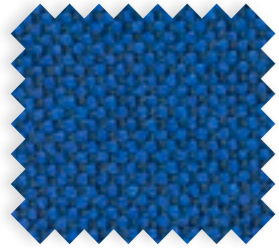
733



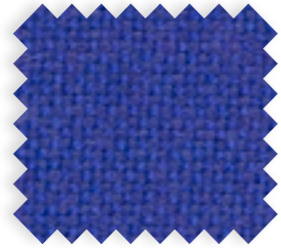
750



753



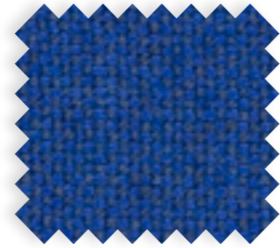
754



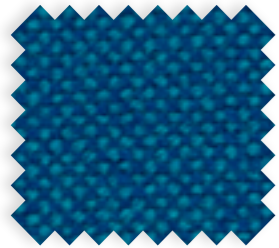
763



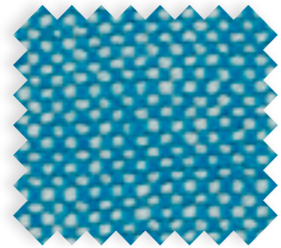
764



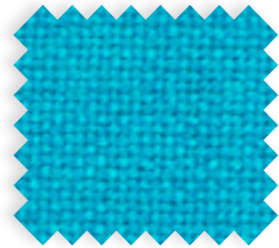
773



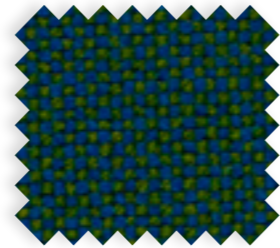
810



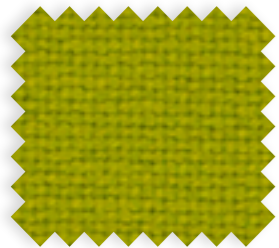
840



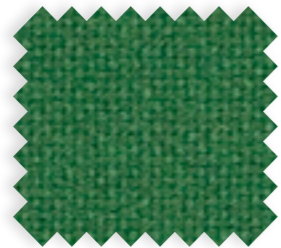
850



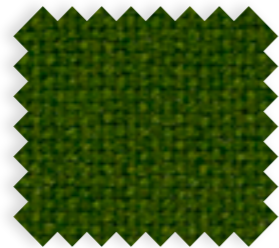
890



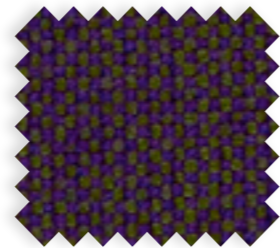
907



944



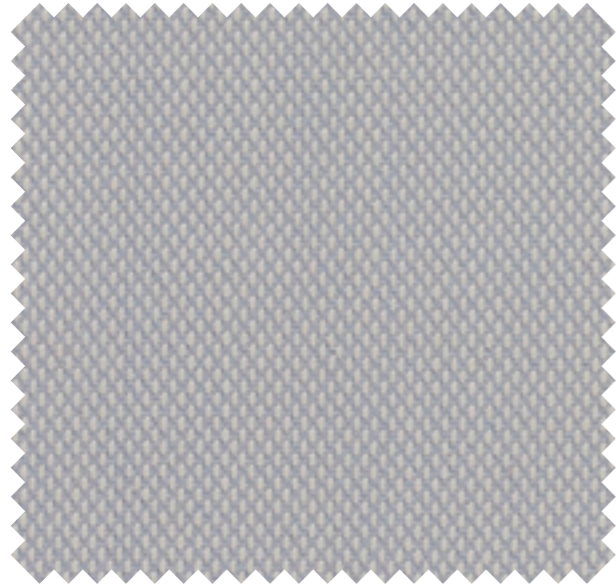
960



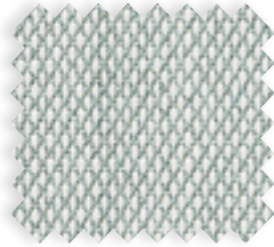
968

STOFF / FABRIC

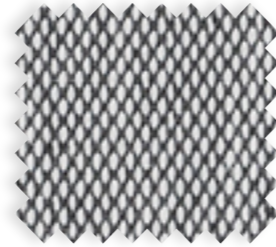
STEELCUT TRIO 3



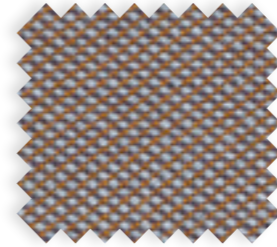
105



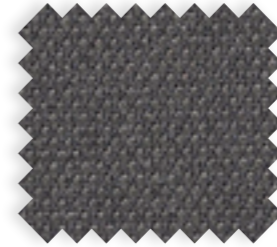
113



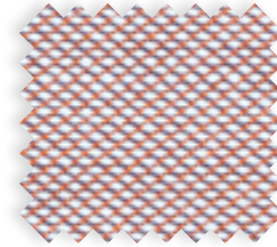
124



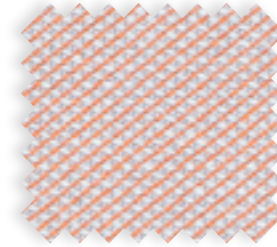
376



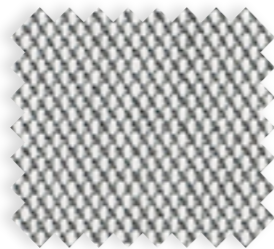
383



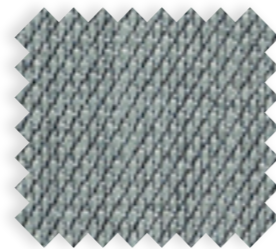
416



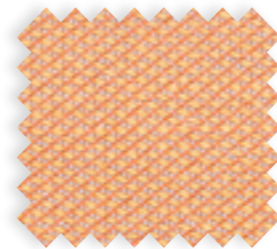
426



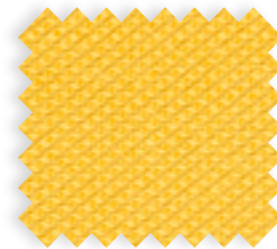
133



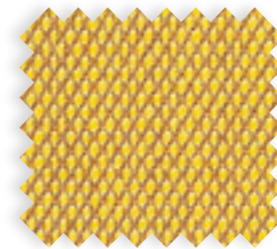
153



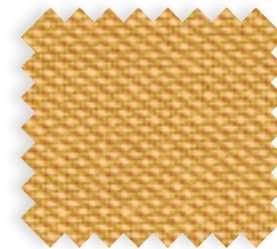
436



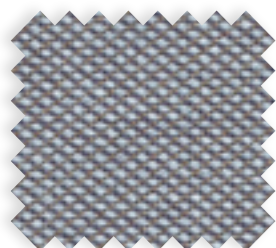
446



453



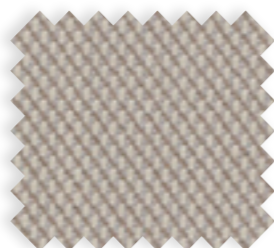
466



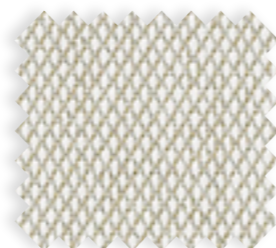
176



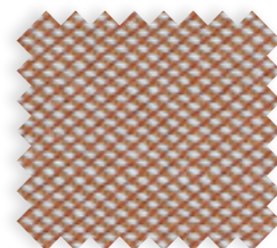
195



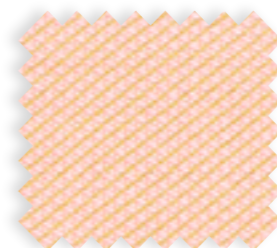
205



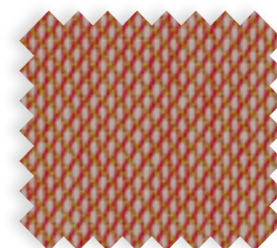
213



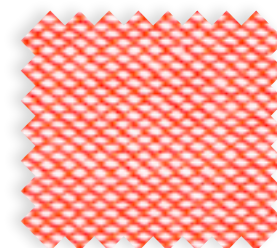
476



506



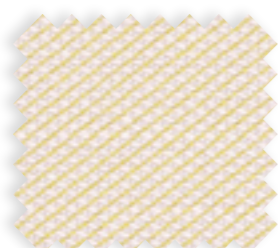
515



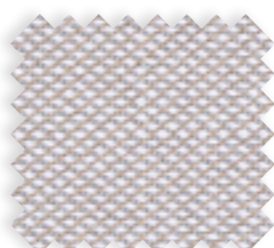
526



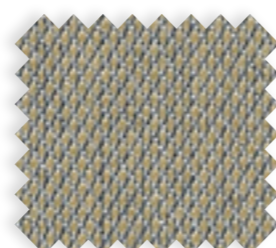
226



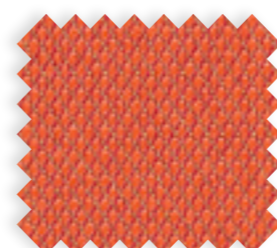
236



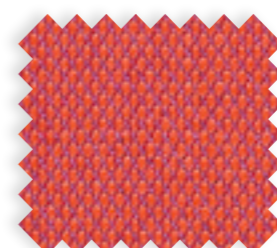
246



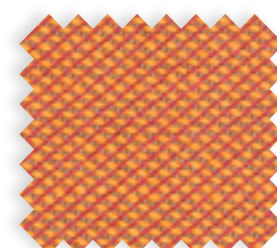
253



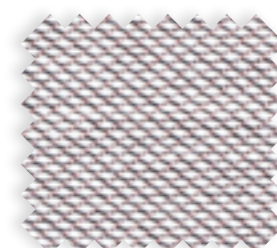
533



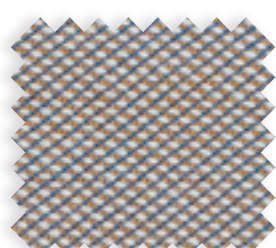
553



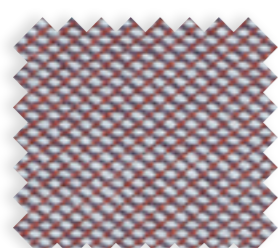
576



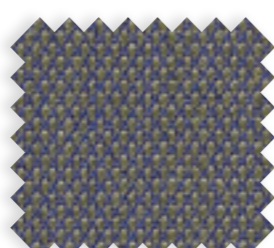
616



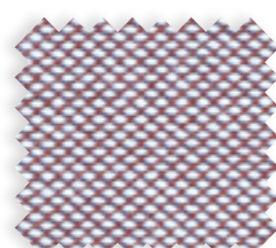
266



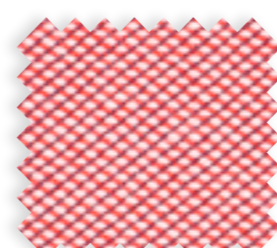
276



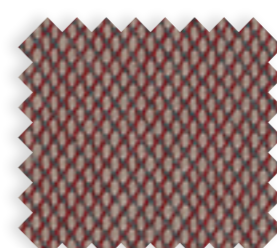
283



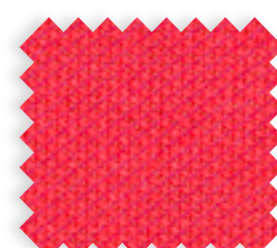
336



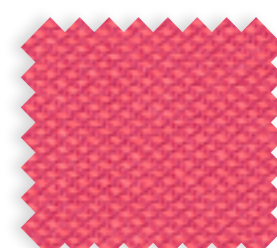
636



645



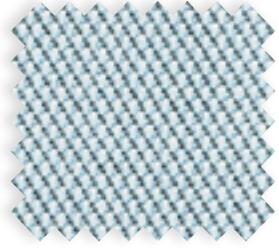
666



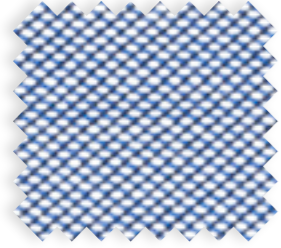
686

STOFF / FABRIC

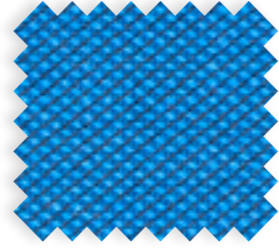
STEELCUT TRIO 3



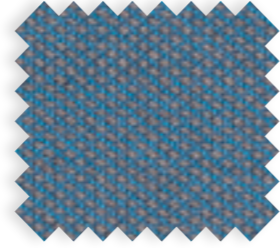
713



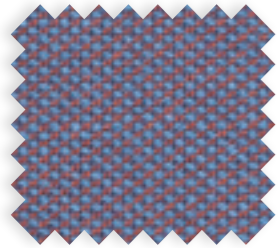
716



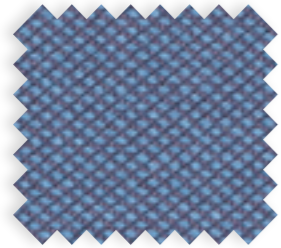
746



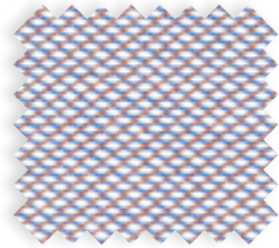
756



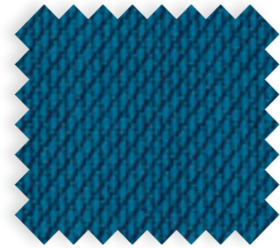
776



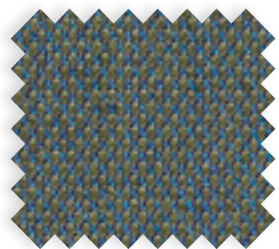
796



806



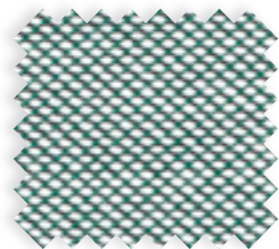
865



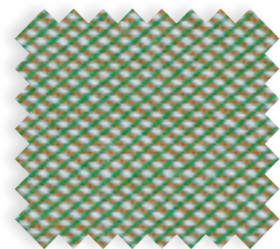
883



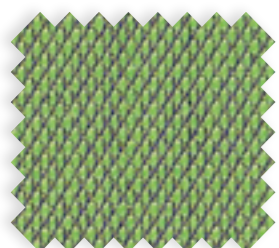
906



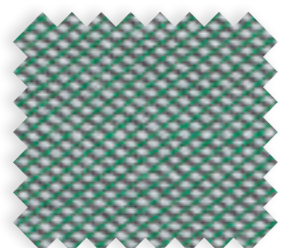
916



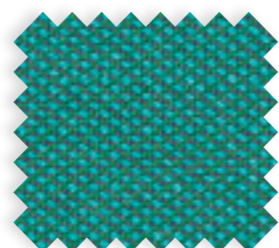
946



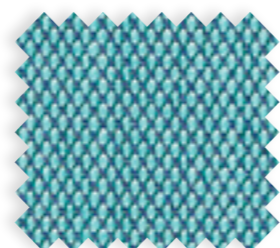
953



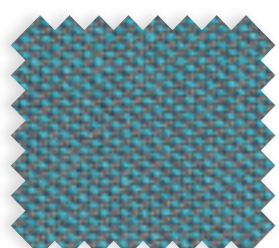
966



976



983



996

STOFF / FABRIC

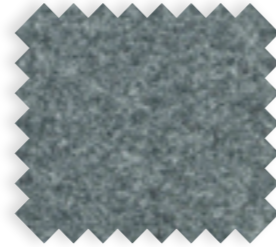
DIVINA MELANGE 2



120



147



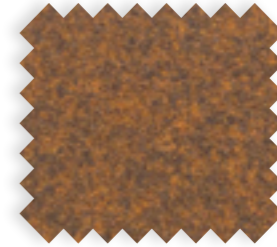
170



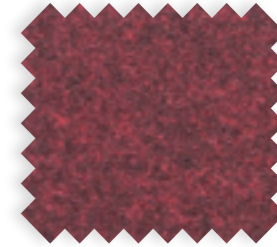
557



567



571



581



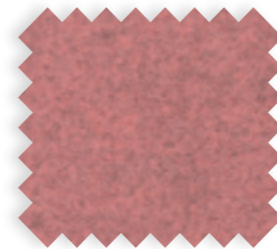
180



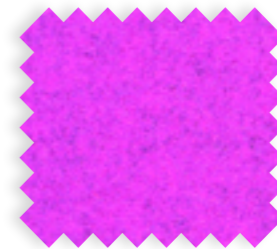
227



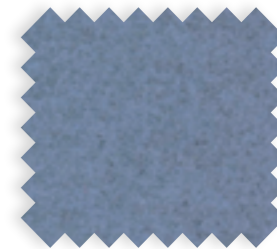
597



617



620



647



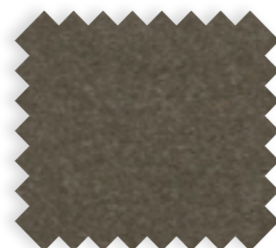
237



260



277



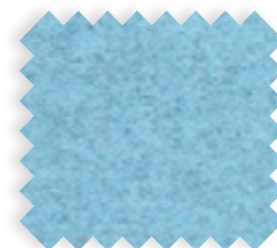
280



677



687



731



747



367



427



457



467



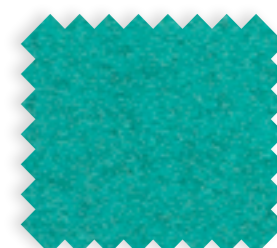
757



777



787



821



471



517



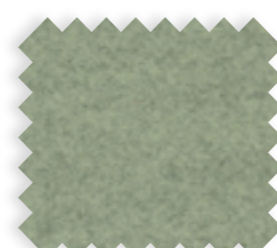
527



547



871



917



937



967

STOFF / *FABRIC*

DIVINA MELANGE 2



977

STOFF / FABRIC

DIVINA MD



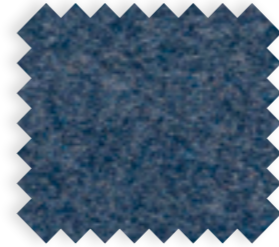
193



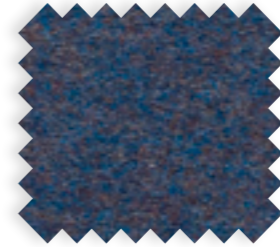
203



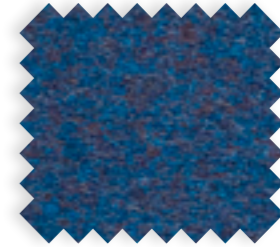
213



743



753



773



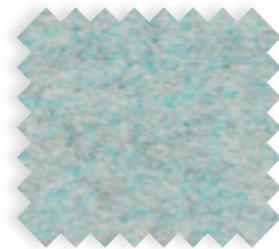
783



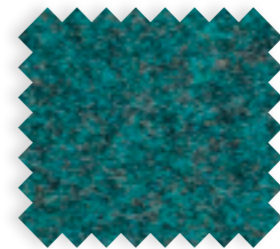
293



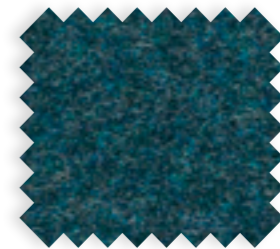
343



813



843



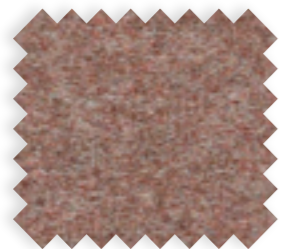
873



913



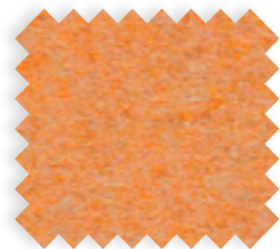
353



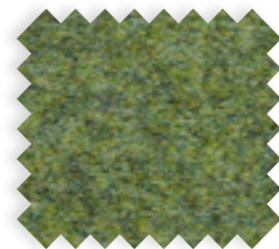
363



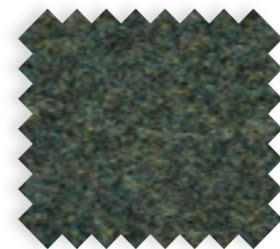
413



433



943



973



453



613



633



653



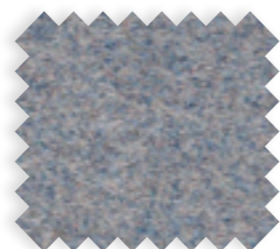
673



683



713



733

STOFF / FABRIC

GREENWICH



924



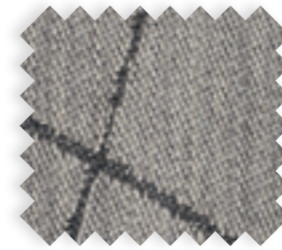
964



966 uni



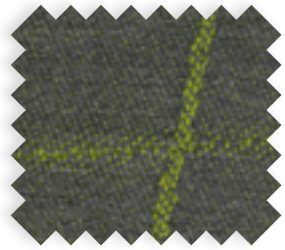
724



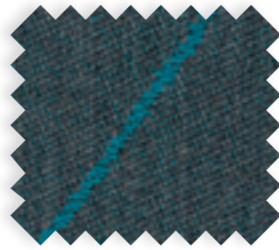
124



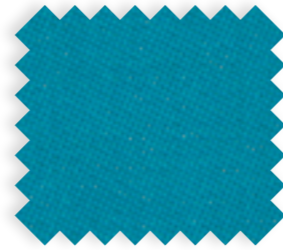
126 uni



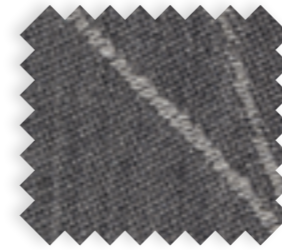
944



744



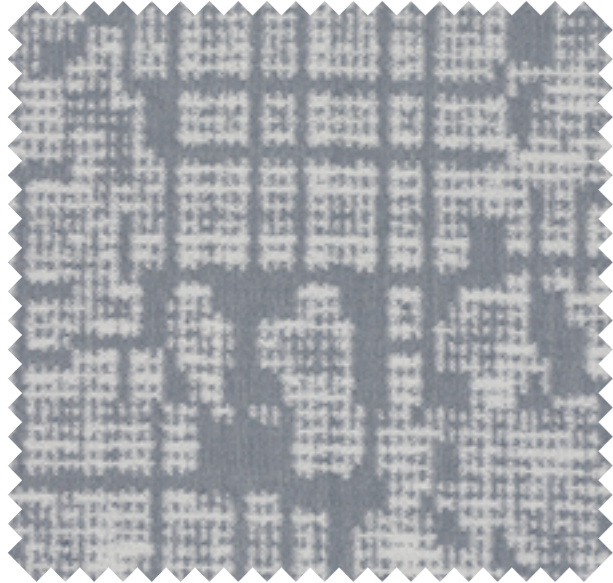
736 uni



144

STOFF / FABRIC

GRID 1+2



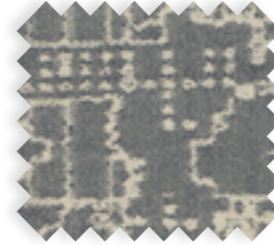
Grid 1 123



Grid 1 163



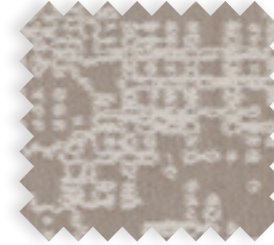
Grid 1 283



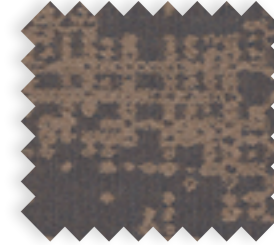
Grid 2 144



Grid 2 184



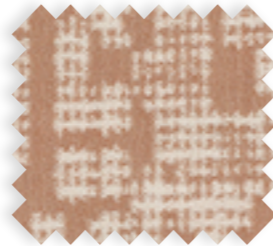
Grid 2 224



Grid 2 264



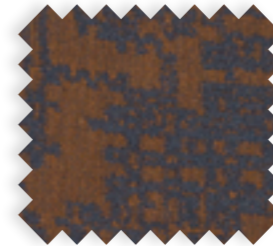
Grid 1 383



Grid 1 443



Grid 2 424



Grid 2 484



Grid 2 584



Grid 2 744



Grid 1 463



Grid 1 543



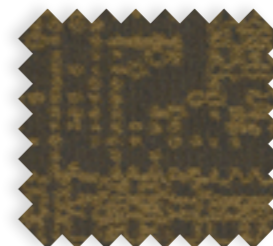
Grid 1 563



Grid 1 783



Grid 2 924



Grid 2 984



Grid 1 943

LEATHER ENTRÉE

L1 & L2

BESCHREIBUNG
Stärke: 1,3–1,5mm
Kräftiges weiches Rindnappaleder mit markantem Millkorn. Ausgesuchte Rindshäute (4,7–5,3m²). Ökologiegerechte Mineralgerbung. Hochwertige Fettstoffe für einen weichen Griff. Im Fass durchgefärbt, mit hochwertigen Farbstoffen. Pigmentzurichtung für Farbegalität und Lichtechtheit.

TESTS
Entspricht der PCP-Verbotsverordnung vom 12.12.1989. Die Leder werden umweltfreundlich, ohne Einsatz von AZO-Farbstoffen, gemäß der Verbotsverordnung hergestellt.
Brandverhalten: Bewertung der Entzündbarkeit nach DIN EN 1021-1 EUFAC-Richtlinie (europ. Polstermöbelverband)
Lichtbeständigkeit: ≥ 5 (EN ISO 105–B02)
Reibechtheit: ≥ 4 trocken: 500 EN ISO 11640, ≥ 4 nass: 80 EN ISO 11640, ≥ 4 alkalisch: 50 EN ISO 11640
Dauerfaltverhalten: 20.000 – keine Veränderungen EN ISO 5402

PFLEGE
Die Leder können mit einem feuchten Tuch und neutraler Seifenlösung gereinigt werden.

DESCRIPTION
Thickness: 1,3–1,5mm
Heavy-weight soft cattle hide leather with expressive grain. European cattle hides (4,7–5,3m²). Ecologically safe mineral tannage. High-value fat stuffs for a soft feel. Dyed-through in the drum, with high-class dye stuffs. Pigmented finish for colour and light constancy.

TESTS
According to the PCP-regulation dated 12/12/1989. The leathers are being produced ecologically safe, according to laws and regulations, without AZO colours. Inflammability: According to DIN EN 1021-1 EUFAC (upholstery furniture union)
Light constancy: ≥ 5 (EN ISO 105–B02)
Rubbing fastness: ≥ 4 dry: 500 EN ISO 11640, ≥ 4 wet: 80 EN ISO 11640, 4 alcalic: 50 EN ISO 11640
Crack resistance: > 20,000 no damage EN ISO 54025

CARE
The leathers can be cleaned with a moistened cloth and neutral soap.

DESCRIPTION
Épaisseur : de 1,3 à 1,5mm
Cuir nappa véritable, épais et doux, doté d'une structure marquante. Cuirs de bovins sélectionnés (de 4,7 à 5,3m²). Tannage minéral écologique. Corps gras de grande qualité pour une sensation souple et douce au toucher. Coloré en tonneau en utilisant des colorants de grande qualité. Finition pigmentée pour une tenue des couleurs et une résistance à la lumière.

TESTS
Conformément au règlement de PCP du 12.12.1989. Le cuir est produit de façon écologique sans utilisation de colorants azoïques, conformément au règlement. Réaction au feu : évaluation de la réaction au feu selon la norme DIN EN 1021-1 EUFAC (association européenne des meubles rembourrés)
Résistance à la lumière : ≥ 5 (EN ISO 105 – B02)
Solidité au frottement : ≥ 4 sec : 500 EN ISO 11640, ≥ 4 mouillé : 80 EN ISO 11640, ≥ 4 alcalin : 50 EN ISO 11640
Résistance aux pliages répétés : 20 000 – pas de changement EN ISO 5402

ENTRETIEN
Nettoyer avec un chiffon humide et une solution savonneuse neutre.

LEATHER SUPERIOR

L3

SUPERIOR BESCHREIBUNG
Stärke: 1,1–1,3mm
Rindleder, anilingefärbt, mit leicht korrigierter feiner Narbenstruktur. Ausgesuchte europäische Rindshäute (4,7–5,3m²). Ökologische Mineralgerbung. Hochwertige Fettstoffe für einen soften Griff. Im Fass durchgefärbt, mit hochwertigen Farbstoffen. Pigmentzurichtung für Farbegalität und Lichtechtheit.

TESTS
Entspricht der PCP-Verbotsverordnung vom 12.12.1989. Die Leder werden umweltfreundlich, ohne Einsatz von AZO-Farbstoffen, gemäß der Verbotsverordnung hergestellt. Lichtbeständigkeit: ≥ 4 (EN ISO 105–B02). Reibechtheit: ≥ 4 trocken: 500 EN ISO 11640, ≥ 3–4 nass: 80 EN ISO 11640, ≥ 3–4 alkalisch: 50 EN ISO 11640. Dauerfaltverhalten: 30.000 – keine Veränderungen EN ISO 5402.

PFLEGE
Die Leder können mit einem feuchten Tuch und neutraler Seifenlösung gereinigt werden.

SUPERIOR DESCRIPTION
Thickness: 1,1–1,3mm
Cattle hide leather, aniline dyed, with lightly corrected fine grain structure. Selected European cattle hides (4,7–5,3m²). Ecologically safe mineral tannage. High-value fat stuffs for a comfortably soft feel. Dyed-through in the drum, with high-class dye stuffs. Pigment finish for colour and light constancy.

TESTS
According to the PCP-regulation dated 12/12/1989. The leathers are being produced ecologically safe, according to laws and regulations, without AZO colours. Light constancy: ≥ 4 (EN ISO 105–B02). Rubbing fastness: ≥ 4 dry: 500 EN ISO 11640, ≥ 3–4 wet: 80 EN ISO 11640, ≥ 3–4 alcalic: 50 EN ISO 11640. Crack resistance: 30,000 – no damage EN ISO 5402.

CARE
The leathers can be cleaned with a moistened cloth and neutral soap.

SUPERIOR DESCRIPTION
Épaisseur : de 1,1 à 1,3mm
Cuir de bovin, teinté à l'aniline, doté d'une structure légèrement corrigée. Cuirs de bovins européens sélectionnés (de 4,7 à 5,3m²). Tannage minéral écologique. Corps gras de grande qualité pour une sensation souple et douce au toucher. Coloré en tonneau en utilisant des colorants de grande qualité. Finition pigmentée pour une tenue des couleurs et une résistance à la lumière.

TESTS
Conformément au règlement de PCP du 12.12.1989. Le cuir est produit de façon écologique sans utilisation de colorants azoïques. Résistance à la lumière : ≥ 4 (EN ISO 105 – B02). Solidité au frottement : ≥ 4 sec : 500 EN ISO 11640, ≥ 3 - 4 mouillé : 80 EN ISO 11640, ≥ 3 - 4 alcalin : 50 EN ISO 11640. Résistance aux pliages répétés : 30 000 – pas de changement EN ISO 5402.

ENTRETIEN
Nettoyer avec un chiffon humide et une solution savonneuse neutre.

URBAN PLUS

PG 0

BESCHREIBUNG

100 % Recycelte Polyester FR.
Nicht schwermetallhaltige
Farbstoffe
Gewicht: 320g/m² ± 5 %
(450g/lfd.M. ± 5 %)
Breite: 140cm ± 2 %
ohne Webkante
Scheuerfestigkeit: 100.000
Martindale Scheuertouren

PRÜFUNGSERGEBNISSE

Feuersicherung:
DIN 4102 B1
EN 1021-1:2006 (Zigarettestest)
EN 1021-2:2006 (Streichholztest)
BS 7176:2007 Low Hazard
BS 5852:2006 Section 4
Ignition Source 5
BS 7176:2007 Medium Hazard
NF D 60-013:2006
UNI 8456 & UNI 9174 Classe 1
Bemerkung: Schwerentflamm-
barkeit hängt von verwendetem
Schaum ab.
Lichtechtheit:
6 (ISO 105-B02:1999)
Reibechtheit:
Nass: 4
Trocken: 4 (ISO 105-X12:2002)

PFLEGE

Waschbar bis 60 °C.
Regelmässig staubsaugen.
Dazu mit einem feuchten Tuch ab-
wischen, oder mit einem speziellen
Polsterschaum behandeln.

FARBABWEICHUNGEN

Handelsübliche Farbabweichungen
vorbehalten.

DESCRIPTION

100 % Recycled Polyester FR.
Non metallic dyestuffs
Weight: 320g/m² ± 5 %
(450g/lin.m. ± 5 %)
Width: 140cm ± 2 % Usable
Abrasion Resistance: 100,000
Martindale cycles

TESTS

Flammability:
BS EN 1021-1:2006 (cigarette)
BS EN 1021-2:2006 (match)
BS 7176:2007 Low Hazard
BS 5852:2006 Section 4
Ignition Source 5
BS 7176:2007 Medium Hazard
DIN 4102 B1
NF D 60-013:2006
UNI 8456 & UNI 9174 Classe 1
Note: Flammability performance
is dependent on foam used.
Light Fastness:
6 (ISO 105-B02:1999)
Fastness to Rubbing:
Wet: 4
Dry: 4 (ISO 105-X12:2002)

CARE

Washable to 60 °C.
Vacuum regularly.
Wipe clean with a damp cloth
or shampoo using proprietary
upholstery shampoo.

COLOUR MATCHING

Batch to batch variations in shade
may occur within commercial
tolerances.

DESCRIPTION

100 % Polyester Recyclé FR.
Teintures non métalliques
Poids: 320g/m² ± 5 %
(450g/m.l. ± 5 %)
Largeur: 140cm ± 2 % utilisable
Résistance à l'abrasion: 100.000
Martindale tours

TESTS

Flammabilité:
EN 1021-1:2006 (cigarette)
EN 1021-2:2006 (allumette)
BS 7176:2007 Low Hazard
BS 5852:2006 Section 4
Ignition Source 5
BS 7176:2007 Medium Hazard
DIN 4102 B1
NF D 60-013:2006
UNI 8456 & UNI 9174 Classe 1
Notez: Réaction au feu dépend
de la mousse utilisée.
Solidité à la lumière:
6 (ISO 105-B02:1999)
Solidité au Frottement:
Mouillé: 4
Sec: 4 (ISO 105-X12:2002)

ENTRETIEN

Lavable jusqu'à 60 °C.
Aspirer régulièrement.
Essuyer avec une étoffe humide
ou nettoyer à l'aide d'un
produit approprié pour tissus
d'ameublement.

STANDARDISATION DES COLORIS

Variations de coloris d'un bain à
un autre peuvent se manifester.



XTREME PLUS

PG 0

BESCHREIBUNG

100 % Recycelte Polyester FR.
Nicht schwermetallhaltige
Farbstoffe
Gewicht: 310g/m² ± 5 %
(435g/lfd.M. ± 5 %)
Breite: 140cm ± 2 %
ohne Webkante
Scheuerfestigkeit: 100.000
Martindale Scheuertouren

PRÜFUNGSERGEBNISSE

Pilling: 5
(BS EN ISO 12945-2:2000)
(Skala: 1–5, 5 ist die beste Note)
Feuersicherung:
DIN 4102 B1
EN 1021-1:2006 (Zigarettestest)
EN 1021-2:2006 (Streichholztest)
BS 7176:2007 Low Hazard
BS 5852:2006 Section 4
Ignition Source 5
BS 7176:2007 Medium Hazard
UNI 8456 & UNI 9174 Class 1
NF D 60-013:2006
Bemerkung: Schwerentflamm-
barkeit hängt von verwendetem
Schaum ab.
Lichtechtheit:
6 (ISO 105-B02:1999)
Reibechtheit:
Nass: 4
Trocken: 4 (ISO 105-X12:2002)

PFLEGE

Waschbar bis 60 °C.
Regelmässig staubsaugen.
Dazu mit einem feuchten Tuch ab-
wischen, oder mit einem speziellen
Polsterschaum behandeln.

FARBABWEICHUNGEN

Handelsübliche Farbabweichungen
vorbehalten

DESCRIPTION

100 % Recycled Polyester FR.
Non metallic dyestuffs
Weight: 310g/m² ± 5 %
(435g/lin.m. ± 5 %)
Width: 140cm ± 2 % Usable
Abrasion Resistance: 100,000
Martindale cycles

TESTS

Pilling: 5
(BS EN ISO 12945-2:2000)
(Scale: 1–5, 5 is the best)
Flammability:
BS EN 1021-1:2006 (cigarette)
BS EN 1021-2:2006 (match)
BS 7176:2007 Low Hazard
BS 5852:2006 Section 4
Ignition Source 5
BS 7176:2007 Medium Hazard
UNI 8456 & UNI 9174 Class 1
NF D 60-013:2006
DIN 4102 B1
Note: Flammability performance
is dependent on foam used.
Light Fastness:
6 (ISO 105-B02:1999)
Fastness to Rubbing:
Wet: 4
Dry: 4 (ISO 105-X12:2002)

CARE

Washable to 60 °C.
Vacuum regularly.
Wipe clean with a damp
cloth or shampoo using proprietary
upholstery shampoo.

COLOUR MATCHING

Batch to batch variations in shade
may occur within commercial
tolerances

DESCRIPTION

100 % Polyester Recyclé FR.
Teintures non métalliques
Poids: 310g/m² ± 5 %
(435g/m.l. ± 5 %)
Largeur: 140cm ± 2 % utilisable
Résistance à l'abrasion:
100.000 Martindale tours

TESTS

Boulochage: 5
(BS EN ISO 12945-2:2000)
(Echelle de 1 à 5, 5 est le
meilleur résultat)
Flammabilité:
NF D 60-013:2006
EN 1021-1:2006 (cigarette)
EN 1021-2:2006 (allumette)
BS 7176:2007 Low Hazard
BS 5852:2006 Section 4
Ignition Source 5
BS 7176:2007 Medium Hazard
UNI 8456 & UNI 9174 Class 1
DIN 4102 B1
Notez: Réaction au feu dépend
de la mousse utilisée.
Solidité à la lumière:
6 (ISO 105-B02:1999)
Solidité au Frottement:
Mouillé: 4
Sec: 4 (ISO 105-X12:2002)

ENTRETIEN

Lavable jusqu'à 60 °C.
Aspirer régulièrement.
Essuyer avec une étoffe humide
ou nettoyer à l'aide d'un produit
approprié pour tissus
d'ameublement.

STANDARDISATION DES COLORIS

Variations de coloris d'un bain à un
autre peuvent se manifester.



STEP & STEP MELANGE

PG 1

BESCHREIBUNG

100 % Trevira CS
Gewicht, pro. lf. Meter
ca. Gramm: 470
Breite, cm: 140

PRÜFUNGSERGEBNISSE

Scheuerfestigkeit Scheuertouren
Martindale (ISO 12947-2) 100.000
Pilling Skala 1–5, max. 5–EN ISO 12945-2 4–5
Lichtechtheit Skala 1–8, max. 8–EN ISO 105-B02 5
Reibechtheit Skala 1–5, max. 5–EN ISO 105x12 (nass/trocken) 4–5
ACT Normen AATCC 8-2001
Wet and Dry Crocking: Pass
AATCC 16 Lightfastness: Pass
California Bulletin
CAL 117-E-Class 1: Pass
ASTM D4157-02 Wyz
Abrasion: Pass
ASTM D3511 Pilling: Pass
Feuersicherung Calif. Bull. 117E
IMO A.652 (16)
MED Certificate IMO
DIN 4102:B1
NFP 92-503:M1
BS EN 1021 1 & 2
BS 5852 Part 1 0,1
Cigarette & match
BS 5852, Crib 5
UNI 9175 Class 1 I EMME
Önorm B 3825 B1 3800-Q1 UK
FAR/JAR 25.853 (a) (i) (ii)

UMWELT

Öko-Tex 100 zertifiziert

DESCRIPTION

100 % Trevira CS
Weight, approx. grams lin.
metre: 470
Width, cm: 140

TESTS

Abrasion resistance rubs
Martindale (EN ISO 12947-2) 100,000
Pilling Skala 1–5, max. 5–EN ISO 12945-2 4–5
Colour fastness to light Scale 1–8, max. 8–EN ISO 105-B02 5
Colour fastness to rubbing Scale 1–5, max.5–EN ISO 105x12 (wet/dry) 4–5
ACT Standards AATCC 8-2001
Wet and Dry Crocking: Pass
AATCC 16 Lightfastness: Pass
California Bulletin
CAL 117-E-Class 1: Pass
ASTM D4157-02 Wyz
Abrasion: Pass
ASTM D3511 Pilling: Pass
Flammability Calif. Bull. 117E
IMO A.652 (16)
MED Certificate IMO
DIN 4102:B1
NFP 92-503:M1
BS EN 1021 1&2
BS 5852 Part 1 0,1
Cigarette & match
BS 5852, Crib 5
UNI 9175 Class 1 I EMME
Önorm B 3825 B1 3800-Q1 UK
FAR/JAR 25.853 (a) (i) (ii)

ENVIRONMENT

100 % free of heavy metals
Oeko-Tex 100 certified

DESCRIPTION

100 % Trevira CS
Poids par mètre linéaire
Grammes env. : 470
Largeur en cm : 140

TESTS

Résistance à l'abrasion, tours
Martindale (ISO 12947-2) 100 000
Boulochage échelle de 1 à 5, max. 5–EN ISO 12945-2 4-5
Résistance à la lumière échelle de 1 à 8, max. 8–EN ISO 105-B02 5
Résistance au frottement échelle de 1 à 5, max. 5–EN ISO 105-X12 (sec/mouillé) de 4 à 5
Standards ACT AATCC 8-2001
Dégorgement par frottement, sec et mouillé : réussi
AATCC 16 résistance à la lumière : réussi
California Bulletin
CAL 117-E-classe 1 : réussi
ASTM D4157-02 Wyz
Abrasion : réussi
ASTM D3511 boulochage : réussi
Inflammabilité Calif. Bull. 117E
IMO A.652 (16)
MED Certificat IMO
DIN 4102:B1
NFP 92-503:M1
BS EN 1021 1 et 2
BS 5852 part 1 0,1
Cigarette et allumette
BS 5852, Crib 5
UNI 9175 classe 1 I EMME
Önorm B 3825 B1 3800-Q1 UK
FAR/JAR 25.853 (a) (i) (ii)

ENVIRONMENT

Certifié Öko-Tex 100

PATINA

PG 1

BESCHREIBUNG

69% Wolle, 22% Flachs, 8% Polyamid, 1% Viskose
Breite: 140 cm nutzbare Breite
Gewicht: 330g/m² ±5 %
(460g/lfd.M ±5%)

PRÜFERGEBNISSE

Scheuerfestigkeit
Schwerer Objekteinsatz/
10 Jahre Garantie
Extern zertifiziert mit ≥100,000
Scheuertouren Martindale
Feuersicherung
EN 1021 - 1 (Zigarettestest)
EN 1021 - 2 (Streichholztest)
BS 7176 Low Hazard
BS 5852 Ignition Source 5
BS 7176 Medium Hazard
BS 5867-2: Type B Curtains & Drapes
UNI 9175 Classe 1 IM
Schwerenflammpbarkeit hängt vom verwendeten Schaum ab. Dieser Stoff wurde mit 34–38 kg/m³ CMHR Schaum getestet.
Lichtechtheit 5 (ISO 105 - B02)
Reibechtheit Nass: 3, Trocken: 4 (ISO 105 - X12)

REINIGUNG

Regelmässig absaugen.
Professionelle Trockenreinigung.
Alternativ dazu mit einem feuchten Tuch abwischen.

DESCRIPTION

69% Wool, 22% Flax, 8% Polyamide, 1% Viscose
Width: 140 cm minimum
Weight: 330g/m² ±5 %
(460g/lin.m ±5%)

TESTS

Abrasion Resistance
Heavy duty/10 year guarantee
Independently certified to ≥100,000
Martindale cycles
Flammability
EN 1021 - 1 (cigarette)
EN 1021 - 2 (match)
BS 7176 Low Hazard
BS 5852 Ignition Source 5
BS 7176 Medium Hazard
BS 5867-2: Type B Curtains & Drapes
UNI 9175 Classe 1 IM
Flammability performance is dependent on components used.
This range has been tested using 34–38 kg/m³ CMHR foam unless otherwise stated.
Light Fastness 5 (ISO 105 - B02)
Fastness to Rubbing Wet: 3, Dry: 4 (ISO 105 - X12)

CLEANING

Vacuum regularly. Professionally dry clean or wipe clean with a damp cloth.

DOMAINE D'UTILISATION

69% Laine, 22% Flax, 8% Polyamide, 1% Viscose
Largeur: 140 cm minimum
Poids: 330g/m² ±5 %
(460g/m.l ±5%)

TESTS

Résistance à l'abrasion
Usage intense/garantie 10 ans.
Certificat
indépendant ≥100,000 cycles
Martindale
Flammabilité
EN 1021 - 1 (cigarette)
EN 1021 - 2 (allumette)
BS 7176 Low Hazard
BS 5852 Ignition Source 5
BS 7176 Medium Hazard
BS 5867-2: Type B Curtains & Drapes
UNI 9175 Classe 1 IM
Le comportement non-feu dépends de la mousse utilisée. Cette gamme a été testé sur une mousse de 34–38 kg/m³ CMHR mousse, excepté mentionné différemment.
Solidité à la lumière 5 (ISO 105 - B02)
Solidité au Frottement Mouillé: 3, Sec: 4 (ISO 105 - X12)

NETTOYAGE

Aspirer régulièrement. Nettoyage à sec professionnel. Autrement, essayer avec un tissu humide.

REMIX 2

DESIGN: GIULIO RIDOLFO
PG 2

VERWENDUNGSBEREICH

Büros, Hotels
Objectbereich, privaten Wohnbereich
Hohe Strapazierfähigkeit

BESCHREIBUNG

90% Schurwolle, 10% Nylon, Kammgarn
Breite ca. 138cm
Gewicht ca. 415g/lf.d.m
Materialgefärbt
Farbunterschiede können vorkommen

PRÜFUNGSERGEBNISSE

Scheuerfestigkeit:
Ca. 100.000 Scheuerhübe gemäss der Martindale Methode
EN ISO 12947
Lichtechtheit (ISO) 5–7
Pilling (EN ISO) 3–4
Reibechtheit (ISO) trocken 4–5, nass 4
Flammschutz:
EN 1021–1/2
ignition source 0–1
BS 5852
ignition source 2–3
ÖNORM B1/Q1
NF D 60 013
UNI 9175 11M
US Cal. Tech. Bull. 117
AS/NZS 3837 Klasse 2
Optional: Crib 5 bei schwerentflammbarer Ausrüstung
(Kopie von Prüfungsbericht verfügbar)

PFLEGE

Sehen Sie bitte die ISO Pflegesymbole

APPLICATION

Offices, hotels, institutions, domestic use
Great durability

DESCRIPTION

90% new wool, 10% nylon, worsted
Width app. 54 inches (138cm)
Weight app. 415g/lin.m
Materialdyed
Colour differences may occur

TESTS

Abrasion:
App. 100.000 rubs acc. to the Martindale method
EN ISO 12947
Lightfastness (ISO) 5–7
Pilling (EN ISO) 3–4
Fastness to rubbing (ISO) dry 4–5, wet 4
Flame resistance:
EN 1021–1/2
ignition source 0–1
BS 5852
ignition source 2–3
ÖNORM B1/Q1
NF D 60 013
UNI 9175 11M
US Cal. Tech. Bull.117
AS/NZS 3837 class 2
Optional: Crib 5 when flame protected
(Copy of test report available)

CARE

Please see the ISO symbols

DOMAINE D’UTILISATION

Tissu d’ameublement pour aménagement privé et public
Grande résistance

DESCRIPTION

90% laine vierge, 10% nylon, peigné
Largeur env. 138cm
Poids env. 415g/m lg
Teinture en bourre
Ecart des coloris possibles

TESTS

Résistance à l’abrasion:
Env. 100.000 révolutions selon le procédé Martindale
EN ISO 12947
Résistance à la lumière (ISO) 5–7
Boulochage (EN ISO) 3–4
Résistance au frottement (ISO) sec 4–5, mouillé 4
Normes au feu:
EN 1021–1/2
ignition source 0–1
BS 5852
ignition source 2–3
ÖNORM B1/Q1
NF D 60 013
UNI 9175 11M
US Cal. Tech. Bull. 117
AS/NZS 3837 classe 2
Optionelle: Crib 5 après traitement d’ignifugation et sur demande
(La copie du compte rendu des tests est disponible sur demande)

ENTRETIEN

Voir les symboles ISO

EUROPOST

PG 2

BESCHREIBUNG

100% reine Schurwolle
Gewicht, pro. lf. Meter ca. Gramm: 800
Breite, cm: 140

PRÜFUNGSERGEBNISSE

Scheuerfestigkeit
Scheuertouren Martindale (ISO 12947-2) 50.000
Pilling Skala 1–5, max. 5–EN ISO 12945-2 4
Lichtechtheit Skala 1–8, max. 8–EN ISO 105-B02 5
Reibechtheit Skala 1–5, max. 5–EN ISO 105x12 (nass/trocken) 4-5
ACT Normen
AATCC 8-2001 Wet and Dry
Crocking: Pass
AATCC 16 Lightfastness: Pass
California Bulletin
CAL 117-E-Class 1: Pass
Feuersicherung Calif. Bull. 117E
BS 5852 Part 1 0,1
Cigarette & match
Önorm B 3825 B1 3800-Q1 UK
UNI 9175 Class 1 | EMME
BS EN 1021 1 & 2
IMO A.652 (16)
MED Certificate IMO
Feuersicherung mit Flovan
BS 5852 Crib 5
DIN 4102-1 B2
NF P 92-503 M2
BS EN 1021 1 & 2, BS 7176
Medium Hazard
BS 5852 Sec. 4 Crib 5, Water Soaking
BS 5651
Feuersicherung mit Zirpro
NF P 92-503 M2

UMWELT

Öko-Tex 100 zertifiziert
Die Blume

DISCRIPTION

100% pure new wool
Weight, approx. grams lin. metre: 800
Width, cm: 140

TESTS

Abrasion resistance rubs Martindale (EN ISO 12947-2) 50,000
Pilling Scale 1–5, max. 5–EN ISO 12945-2 4
Colour fastness to light Scale 1–8, max. 8–EN ISO 105-B02 5
Colour fastness to rubbing Scale 1–5, max.5–EN ISO 105x12 (wet/dry) 4–5
ACT Standards
AATCC 8-2001 Wet and Dry
Crocking: Pass
AATCC 16 Lightfastness: Pass
California Bulletin
CAL 117-E-Class 1: Pass
Flammability Calif. Bull. 117E
BS 5852 Part 1 0,1
Cigarette & match
Önorm B 3825 B1 3800-Q1 UK
UNI 9175 Class 1 | EMME
BS EN 1021 1 & 2
IMO A.652 (16)
MED Certificate IMO
Flammability with Flovan
BS 5852 Crib 5
DIN 4102-1 B2
NF P 92-503 M2
BS EN 1021 1 & 2, BS 7176
Medium Hazard
BS 5852 Sec. 4 Crib 5, Water Soaking
BS 5651
Flammability with Zirpro
NF P 92-503 M2

ENVIRONMENT

Ecolabel Flower
Oeko-Tex 100 certified

DISCRIPTION

100% pure laine vierge
Poids par mètre linéaire env. Grammes : 800
Largeur en cm : 140

TESTS

Résistance à l’abrasion, tours Martindale (ISO 12947-2) 50 000
Boulochage échelle de 1 à 5, max. 5-EN ISO 12945-2 4
Résistance à la lumière échelle de 1 à 8, max. 8-EN ISO 105-B02 5
Résistance au frottement, échelle de 1 à 5, max. 5-EN ISO 105-X12 (sec/mouillé) de 4 à 5
Standards ACT
AATCC 8-2001 mouillé et sec
Dégorgement par frottement : réussi
AATCC 16 résistance à la lumière : réussi
California Bulletin
CAL 117-E-classe 1 : réussi
Inflamabilité Calif. Bull. 117E
BS 5852 part 1 0,1
Cigarette et allumette
Önorm B 3825 B1 3800-Q1 UK
UNI 9175 classe 1 | EMME
BS EN 1021 1 et 2
IMO A.652 (16)
MED Certificat IMO
Inflamabilité avec Flovan
BS 5852 Crib 5
DIN 4102-1 B2
NF P 92-503 M2
BS EN 1021 1 et 2, BS 7176
« Medium Hazard »
BS 5852 Sect. 4 Crib 5, trempage à l’eau
BS 5651
Inflamabilité avec Zirpro
NF P 92-503 M2

ENVIRONMENT

Ecolabel Flower
Oeko-Tex 100 certified



CLARA 2

DESIGN: ANNE BIRGITTE HANSEN
PG 2

VERWENDUNGSBEREICH

Büros, Hotels
Objectbereich,
privaten Wohnbereich
Hohe Strapazierfähigkeit

BESCHREIBUNG

92% Schurwolle,
Kammgarn/8% Nylon
Breite 138cm
Gewicht ca. 400g/lfd.m
Garngefärbt
Farbunterschiede
können vorkommen

PRÜFUNGSERGEBNISSE

Scheuerfestigkeit:
Ca. 80.000 Scheuerhübe
gemäss der Martindale
Methode EN ISO 12947
Lichtechtheit (ISO) 5–7
Pilling (EN ISO) 4
Reibechtheit (ISO)
Trockener 4–5, Nasser 4
Flammschutz:
EN 1021-1/2
ignition source 0–1
BS 5852
ignition source 2–3
DIN 4102 B2
Önorm B1/Q1
NF D 60 013
UNI 9175, 1IM
US Cal. Tech. Bull. 117
IMO A.652 (16)
Crib 5 bei schwerentflammbare
Ausrüstung
(Kopie von Prüfungs-
bericht verfügbar)

PFLEGE

Sehen Sie bitte die ISO
Pfllegesymbole

APPLICATION

Offices, hotels,
institutions, domestic use
Great wearability

DESCRIPTION

92% new wool, worsted/
8% nylon
Width 54 inches (138 cm)
Weight app. 400g/lin.m
Yarndyed
Colour differences
may occur

TESTS

Abrasion:
App. 80.000 rubs acc.
to the Martindale method
EN ISO 12947
Lightfastness (ISO) 5–7
Pilling (EN ISO) 4
Fastness to rubbing (ISO)
dry 4–5, wet 4
Flame resistance:
EN 1021-1/2
ignition source 0–1
BS 5852
ignition source 2–3
DIN 4102 B2
Önorm B1/Q1
NF D 60 013
UNI 9175, 1IM
US Cal. Tech. Bull. 117
IMO A.652 (16)
Crib 5 when flame protected
(Copy of test report
available)

CARE

Please see the ISO symbols

DOMAINE D'UTILISATION

Tissu d'ameublement
pour aménagement
privé et public
Grande résistance

DESCRIPTION

92% laine vierge, peigné
8% nylon
Largeur 138cm
Poids env. 400g/m lg
Teinture sur fil
Ecart des coloris possibles

TESTS

Résistance à l'abrasion:
Env. 80.000 révolutions
selon le procédé Martindale
EN ISO 12947
Résistance à la lumière
(ISO) 5–7
Boulochage (EN ISO) 4
Résistance au frottement
(ISO) sec 4–5, mouillé 4
Normes au feu:
EN 1021-1/2
ignition source 0–1
BS 5852
ignition source 2–3
DIN 4102 B2
Önorm B1/Q1
NF D 60 013
UNI 9175, 1IM
US Cal. Tech. Bull. 117
IMO A.652 (16)
Crib 5 après traitement
d'ignifugation
et sur demande
(La copie du compte
rendu des tests est
disponible sur demande)

ENTRETIEN

Voir les symboles ISO

MAINLINE FLAX

PG 2

BESCHEIBUNG

70% Schurwolle, 30% Flachs
Umweltfreundlich
Schnell erneuerbar und
kompostierbar.
Breite: 140cm nutzbare Breite
Gewicht: 435g/m² ±5%
(610g/lfd.M ±5%)

PRÜFERGEBNISSE

Scheuerfestigkeit
Schwerer Objekteinsatz/
10 Jahre Garantie
Extern zertifiziert mit ≥50,000
Scheuertouren Martindale
Feuersicherung
EN 1021 - 1 (Zigarettestest)
EN 1021 - 2 (Streichholztest)
BS 7176 Low Hazard
BS 5852 Ignition Source 5
BS 7176 Medium Hazard
BS 5867-2 Type B Curtains &
Drapes
UNI 9175 Classe 1 IM
ÖNORM B 3825 & A 3800-1
Bemerkung: Schwerentflamm-
barkeit hängt von verwendetem
Schaum ab.
Lichtechtheit
5 (ISO 105 - B02)
Reibechtheit
Nass: 3, Trocken: 4
(ISO 105 - X12)

REINIGUNG

Regelmässig absaugen. Professio-
nelle Trockenreinigung. Alternativ
dazu mit einem feuchten Tuch
abwischen.

DESCRIPTION

70% Virgin Wool, 30% Flax
Environmental
Rapidly renewable and
compostable.
Width: 140cm minimum
Weight: 435g/m² ±5%
(610g/lin.m ±5%)

TESTS

Abrasion Resistance
Heavy duty/10 year guarantee
Independently certified to
≥50,000
Martindale cycles
Flammability
EN 1021 - 1 (cigarette)
EN 1021 - 2 (match)
BS 7176 Low Hazard
BS 5852 Ignition Source 5
BS 7176 Medium Hazard
BS 5867-2 Type B Curtains &
Drapes
UNI 9175 Classe 1 IM
ÖNORM B 3825 & A 3800-1
Note: Flammability performance is
dependent on foam used.
Light Fastness
5 (ISO 105 - B02)
Fastness to Rubbing
Wet: 3, Dry: 4 (ISO 105 - X12)

CLEANING

Vacuum regularly. Professionally
dry clean or wipe clean with a
damp cloth.

DOMAINE D'UTILISATION

70% Laine Vierge, 30% Lin
Écologique
Rapidement renouvelable et
compostable.
Largeur: 140cm minimum
Poids: 435g/m² ±5%
(610g/m.l ±5%)

TESTS

Résistance à l'abrasion
Usage intense/garantie 10 ans.
Certificat
indépendant ≥50 000 cycles
Martindale
Flammabilité
EN 1021 - 1 (cigarette)
EN 1021 - 2 (allumette)
BS 7176 Low Hazard
BS 5852 Ignition Source 5
BS 7176 Medium Hazard
BS 5867-2 Type B Curtains &
Drapes
UNI 9175 Classe 1 IM
ÖNORM B 3825 & A 3800-1
Notez: Réaction au feu dépend de
la mousse utilisée.
Solidité à la lumière
5 (ISO 105 - B02)
Solidité au Frottement
Mouillé: 3, Sec: 4 (ISO 105 - X12)

NETTOYAGE

Aspirer régulièrement. Nettoyage
à sec professionnel. Autrement,
essuyer avec un tissu humide.



FIORD

PG 3

BESCHREIBUNG

Zusammensetzung: 92 % Schurwolle, 8 % Nylon
Garn: Kammgarn
Bindung: Schafthgewebe
Breite: Ca. 140cm
(ca. 55 Zoll)
Gewicht: Ca. 500g/lm

TESTS

Abrieb:
Ca. 60.000 Martindale-Touren,
EN ISO 12947
Pilling:
Note 4-5, EN ISO 12945
Lichtechtheit:
Note 5-7, ISO 105-B02
Flammfestigkeit:
EN 1021-1/2
BS 5852 Teil 1
DIN 4102 B2
NF D 60 013
UNI 9175 11M
US Cal. Bull. 117-2013
IMO FTP Code 2010: Teil 8
Mit Flammschutzbehandlung:
BS 5852 Crib 5
Enthält keine bromierten
Flammschutzmittel

PFLEGE

Staubsaugen und Trockenreinigung

DESCRIPTION

Composition: 92 % new wool,
8 % nylon
Yarn type: Worsted
Binding: Dobby
Width: App. 140cm
(app. 55 inches)
Weight: App. 500g/lin.m

TESTS

Abrasion:
Approximately 60.000 Martindale
rubs, EN ISO 12947
Pilling:
Note 4-5, EN ISO 12945
Lightfastness:
Note 5-7, ISO 105-B02
Flame resistance:
EN 1021-1/2
BS 5852 part 1
DIN 4102 B2
NF D 60 013
UNI 9175 11M
US Cal. Bull. 117-2013
IMO FTP Code 2010:Part 8
With flame retardant treatment:
BS 5852 Crib 5
No use of brominated flame
retardants

CARE

Vacuuming and dry cleaning

DESCRIPTION

Composition : 92 % laine vierge,
8 % nylon
Type de fil : peigné
Liage : ratière
Largeur : env. 140cm
(env. 55 pouces)
Poids : env. 500g/m. lin

TESTS

Abrasion :
environ 60 000 frottements
Martindale, EN ISO 12947
Boulochage :
note 4-5, EN ISO 12945
Stabilité à la lumière :
n-ote 5-7, ISO 105-B02
Résistance aux flammes :
EN 1021-1/2
BS 5852 part 1
DIN 4102 B2
NF D 60 013
UNI 9175 11M
US Cal. Bull. 117-2013
IMO FTP Code 2010:Part 8
Avec traitement par retardateur
de flamme : BS 5852 Crib 5
Pas d'utilisation de retardateur
de flamme bromé

ENTRETIEN

Aspirateur et nettoyage à sec

DIVINA 3

DESIGN: FINN SKÖDT

PG 3

VERWENDUNGSBEREICH

Büros, Hotels
Objectbereich,
privaten Wohnbereich

BESCHREIBUNG

100 % Schurwolle
Breite 150cm
Gewicht ca. 840g/lfd.m
Stückgefärbt
In hellen Farben können
Fremdfasern vorkommen
Farbunterschiede
können vorkommen

PRÜFUNGSERGEBNISSE

Scheuerfestigkeit:
Ca. 45.000 Scheuerhübe
gemäss der Martindale
Methode EN ISO 12947
Lichtechtheit (ISO) 5–7
Pilling (EN ISO) 3
Reibechtheit (ISO)
trocken 4–5, nass 4–5
Flammschutz:
DIN 4102 B2
Önorm B1/Q1
EN 1021–1/2
ignition source 0–1
BS 5852
ignition source 2–5
NF D 60 013
UNI 9175, 11M
US Cal. Tech. Bull. 117
AS/NZS 1530.3
IMO A.652(16)
(Kopie von Prüfungs-
bericht verfügbar)

PFLEGE

Sehen Sie bitte die ISO
Pflugesymbole

APPLICATION

Offices, hotels,
institutions, domestic use

DESCRIPTION

100 % new wool
Width 59 inches (150cm)
Weight app. 840g/lin.m
Piecedyed
Foreign fibres may occur
in light colours
Colour differences
may occur

TESTS

Abrasion:
App. 45.000 rubs acc. to the
Martindale method EN ISO 12947
Lightfastness (ISO) 5–7
Pilling (EN ISO) 3
Fastness to rubbing (ISO)
dry 4–5, wet 4–5
Flame resistance:
EN 1021–1/2
ignition source 0–1
BS 5852
ignition source 2–5
DIN 4102 B2
Önorm B1/Q1
NF D 60 013
UNI 9175, 11M
US Cal. Tech. Bull. 117
AS/NZS 1530.3
IMO A.652(16)
(Copy of test report
available)

CARE

Please see the ISO symbols

DOMAINE D'UTILISATION

Tissu d'ameublement
pour aménagement
privé et public

DESCRIPTION

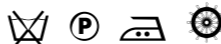
100 % laine vierge
Largeur 150cm
Poids env. 840g/m lg
Teinture à la pièce
Dans les couleurs claires,
présence de fibres étrangères
Ecart des coloris possibles

TESTS

Résistance à l'abrasion:
Env. 45.000 révolutions
selon le procédé Martindale
EN ISO 12947
Résistance à la lumière
(ISO) 5–7
Boulochage (EN ISO) 3
Résistance au frottement
(ISO) sec 4–5, mouillé 4–5
Normes au feu:
NF D 60 013
EN 1021–1/2
ignition source 0–1
BS 5852
ignition source 2–5
DIN 4102 B2
Önorm B1/Q1
UNI 9175, 11M
US Cal. Tech. Bull. 117
AS/NZS 1530.3
IMO A.652(16)
(La copie du compte
rendu des tests est dis-
ponible sur demande

ENTRETIEN

Voir les symboles ISO



STEELCUT 2

DESIGN: FRANS DIJKMEIJER & GIULIO RIDOLFO
PG 3

VERWENDUNGSBEREICH

Büros, Hotels
Objectbereich,
privaten Wohnbereich
Hohe Strapazierfähigkeit

BESCHREIBUNG

90% Schurwolle, Kammgarn
10% Nylon
Breite 140cm
Gewicht ca. 825g/lfd.m
Stückgefärbt
In hellen Farben können
Fremdfasern vorkommen
Farbunterschiede
können vorkommen

PRÜFUNGSERGEBNISSE

Scheuerfestigkeit:
Ca. 80.000 Scheuerhübe
gemäß der Martindale
Methode EN ISO 12947
Lichtechtheit (ISO) 5–7
Pilling (EN ISO) 3–4
Reibechtheit (ISO)
Trockener 4–5, Nasser 4
Flammschutz:
EN 1021-1/2
ignition source 0–1
BS 5852 part 1
ignition source 0–1
BS 5852
ignition source 2
DIN 4102 B2
Önorm B1/Q1
NF D 60 013
Uni 9175, 1IM
US Cal. Tech. Bull. 117
IMO A.652 (16)
Crib 5 bei schwerentflammbare
Ausrüstung
(Kopie von Prüfungsbericht
verfügbar)

PFLEGE

Sehen Sie bitte die ISO
Pfllegesymbole



APPLICATION

Offices, hotels,
institutions, domestic use
Great wearability

DESCRIPTION

90% new wool, worsted
10% nylon
Width 55 inches (140cm)
Weight app. 825g/lin.m
Piecedyed
Foreign fibres may occur
in light colours
Colour differences
may occur

TESTS

Abrasion:
App. 80.000 rubs acc. to the
Martindale method EN ISO 12947
Lightfastness: (ISO) 5–7
Pilling (EN ISO) 3–4
Fastness to rubbing: (ISO)
dry 4–5, wet 4
Flame resistance:
EN 1021-1/2
ignition source 0–1
BS 5852 part 1
ignition source 0–1
BS 5852
ignition source 2
DIN 4102 B2
Önorm B1/Q1
ND D 60 013
UNI 9175, 1IM
US Cal. Tech. Bull.117
IMO A.652 (16)
Crib 5 when flame protected
(Copy of test report
available)

CARE

Please see the ISO symbols

DOMAINE D'UTILISATION

Tissu d'ameublement
pour aménagement
privé et public
Grande résistance

DESCRIPTION

90% laine vierge, peigné
10% nylon
Largeur 140cm
Poids env. 825g/m lg
Teinture à la pièce
Dans les couleurs claires,
présence de fibres étrangères
Ecart des coloris possibles

TESTS

Résistance à l'abrasion:
Env. 80.000 révolutions
selon le procédé Martindale
EN ISO 12947
Résistance à la lumière
(ISO) 5–7
Boulochage (EN ISO) 3–4
Résistance au frottement
(ISO) sec 4–5, mouillé 4
Normes au feu:
EN 1021-1/2
ignition source 0–1
BS 5852 part 1
ignition source 0–1
BS 5852
ignition source 2
DIN 4102 B2
Önorm B1/Q1
UNI 9175, 1IM
US Cal. Tech. Bull. 117
IMO A.652 (16)
Crib 5 après traitement
d'ignifugation et sur demande
(La copie du compte
rendu des tests est
disponible sur demande)

ENTRETIEN

Voir les symboles ISO

STAMSKIN® TOP F 4340

PG 3

VERWENDUNGSBEREICH

Textilwaren für Möbel mit höchster
Beanspruchung in öffentlichen Ein-
richtungen, im Objektgeschäft und
in Gewerberäumen. Hohe Farb-
stabilität aufgrund von UV-Schutz.
Sehr pflegeleicht, da wasserdicht
und schmutzabweisend behandelt.
Erfüllt höchste hygienische
Ansprüche.

BESCHREIBUNG

Mehrschichtverbund
Trägermaterial Polyamid-jersey
Breite ca. 140cm
Gewicht 780g/m²
Dicke 1,0–1,2mm
Farbunterschiede können vorkommen

PRÜFUNGSERGEBNISSE

Scheuerfestigkeit: > 120.000
Scheuertouren gemäß Martindale
EN ISO 12947-2
Knicken: 400 000 Hübe gemäß
EN ISO 7854
Schimmelhemmend: EN ISO 846–
A Stufe 0, ausgezeichnet
Flammschutz: Zigarettentest/
Streichholztest EN 1021.1–
1021.2
Österreich: B1–ÖNORM B 3800/T2
Deutschland: K1/1,1mm–
DIN 53438/T2
Frankreich: M2–NFP 92.507
Italien: Classe 2 UNI 9177/87
Schweiz: 5.3 (Certificat N°6625)–
SN 198898–VKF/AEAI
USA: UFAC Fabric–CA 117E;
FAA-Horizontal–FMVSS 302; BFD
IX-1-NFPA 260; BIFMA X5.7 Fab
Screen RC
Australien: AS/NZS 1530-3

Optional einige Farben auch mit
schwer entflammbarer Ausrüstung:
*STAMSKIN® TOP F 4340 FR:
BS 5852 Crib 5, Class 1 IM, UNI
9175:2008, NF D 60-013 art.
AM18

Marine-Test: OMI A652 part16
Luftfahrttest: FAR 25.853 Appen-
dix F, Part.1

PFLEGE

Mit Bürste und Seifenwasser
waschen, anschließend mit klarem
Wasser spülen. Keine lösungs-
mittelhaltigen oder ölhaltigen
Reinigungsmittel verwenden.

APPLICATION

Fabrics for heavy-duty furnishing
use in public and semi-public
places and commercial premi-
ses. High colour stability due to
UV protection. Waterproof and
stain-resistant treated, very easy to
clean. Meets the highest hygiene
standards.

DESCRIPTION

Multi-layer composite
Base cloth Polyamide-jersey
Width approx. 140cm
Weight 780g/m²
Thickness 1,0–1,2mm
Colour differences may occur

TESTS

Abrasions: > 120,000 rubs acc. to
Martindale EN ISO 12947-2
Flexing resistance: 400 000 cycles
acc. EN ISO 7854
Mould and mildew resistance: EN
ISO 846–A degree 0, excellent
Flame resistance:
Test cigarette/match EN
1021.1–1021.2
Austria: B1–ÖNORM B 3800/T2
Germany: K1/1,1mm–
DIN 53438/T2
France: M2–NFP 92.507
Italy: Class 2 UNI 9177/87
Switzerland: 5.3 (Certificate
N°6625)–SN 198898–VKF/AEAI
United States: UFAC Fabric–CA
117E; FAA-Horizontal–FMVSS
302; BFD IX-1-NFPA 260; BIFMA
X5.7 Fab Screen RC
Australia: AS/NZS 1530-3

Optional some colours also with
flame resistant finish:
*STAMSKIN® TOP F 4340 FR:
BS 5852 Crib 5, Class 1 IM, UNI
9175 : 2008, NF D 60-013 art.
AM18

Marine test: OMI A652 part16
Aeronautical test: FAR 25.853
Appendix F, Part.1

CARE

Easy to wash with a brush and
soapy water followed by rinsing
with clean water. Do not use stain-
removers containing solvents or oily
products.

DOMAINE D'UTILISATION

Textiles pour mobilier d'intérieur à
usage intensif: collectif, contract
et professionnel

DESCRIPTION

Composite multicouches
Support Polyamide-jersey
Largeur env. 140cm
Poids 780g/m²
Epaisseur 1,0–1,2mm
Ecart des coloris possibles

TESTS

Résistance à l'abrasion:
> 120 000 révolutions selon
le procédé Martindale EN ISO
12947-2
Résistance aux pliages: 400 000
selon EN ISO 7854
Résistance à la moisissure: EN ISO
846–A, Degré 0, excellent
Normes au feu:
Test cigarette/allumette EN
1021.1–1021.2
Autriche: B1–ÖNORM B 3800/T2
Allemagne: K1/1,1mm–
DIN 53438/T2
France: M2–NFP 92.507
Italie: Classe 2 UNI 9177/87
Suisse: 5.3 (Certificat N°6625)–
SN 198898–VKF/AEAI
Etats-Unis: UFAC Fabric–CA
117E; FAA-Horizontal–FMVSS
302; BFD IX-1-NFPA 260; BIFMA
X5.7 Fab Screen RC
Australie: AS/NZS 1530-3

Quelques couleurs sur
demande aussi avec
traitement d'ignifugation:
*STAMSKIN® TOP F 4340 FR:
BS 5852 Crib 5, Class 1 IM, UNI
9175 : 2008, NF D 60-013 art.
AM18

Test marine: OMI A652 part16
Test aéronautique: FAR 25.853
Appendix F, Part.1

ENTRETIEN

Simple avec brosse et eau
savonneuse suivi d'un rinçage à
l'eau claire. Eviter l'utilisation de
détachants contenant des solvants
ou des produits huileux.

MARVEL

PG 3

VERWENDUNGSBEREICH

Büros, Hotels,
Objektbereich,
Privater Wohnbereich
Hohe Strapazierfähigkeit

BESCHREIBUNG

Oberfläche: 100 % Polyurethane
Trägergewebe: 70 % Polyester,
30 % Cotton
Breite: mind. 140cm
Gewicht: 467 g/m² ± 5 %
(654 g/lfd.M ± 5 %)

PRÜFUNGSERGEBNISSE

Flexes: 700,000 (ISO 7854)
Scheuerfestigkeit: 100,000
Martindale
Scheuertouren, 2 Jahre Garantie
(Details auf Anfrage)
Lichtechtheit:
5 (ISO 105 – B02:2013)
Reibechtheit:
Nass: 4, Trocken: 4
(ISO 105 – X12:2002)
Feuersicherung:
BS EN 1021 – 1:2014
(Zigarettentest)
BS EN 1021 – 2:2014
(Streichholztest)
BS 7176:2007 Low Hazard
BS 5852:2006 Section 4 Ignition
Source 5
BS 7176:2007 Medium Hazard
Bemerkung: Schwerentflamm-
barkeit hängt von verwendetem
Schaum ab.

PFLEGE

Vorsichtig mit einem feuchten
Baumwolltuch und einer milden
Seifenlauge abwischen.

APPLICATION

Office, hotels,
institutions, domestic use
Great wearability

DESCRIPTION

Surface:
100 % Polyurethane
Substrate:
70 % Polyester, 30 % Cotton
Width: 140cm minimum
Weight: 467 g/m² ± 5 %
(654 g/lin.m ± 5 %)

TESTS

Flexes: 700,000 (ISO 7854)
Abrasion: 100,000 Martindale
Cycles, 2 year guarantee
(full details available)
Fastness to Rubbing
Wet: 4, Dry: 4
(ISO 105 – X12:2002)
Light Fastness
5 (ISO 105 – B02:2013)
Flammability:
BS EN 1021 – 1:2014 (cigarette)
BS EN 1021 – 2:2014 (match)
BS 7176:2007 Low Hazard
BS 5852:2006 Section 4 Ignition
Source 5
BS 7176:2007 Medium Hazard
Note: Flammability performance is
dependent on foam used.

CARE

Wipe with a slightly damp cotton
cloth and a mild soap solution.

DOMAINE D'UTILISATION

Tissu d'ameublement
pour aménagement
privé et public
Grande résistance

DESCRIPTION

Surface : 100 % Polyuréthane,
Couche Inférieure : 70 % Polyester,
30 % Cotton
Largeur : 140cm minimum
Poids : 467 g/m² ± 5 %
(654 g/m lg ± 5 %)

TESTS

Flexes : 700,000 (ISO 7854)
Résistance à l'abrasion :
Garantie de 2 ans / 100,000
Martindale tours (renseignements
complémentaires disponibles)
Solidité à la lumière :
5 (ISO 105 – B02:2013)
Solidité au Frottement :
Mouillé : 4, Se c: 4
(ISO 105 – X12:2002)
Normes au feu :
BS EN 1021 – 1:2014 (cigarette)
BS EN 1021 – 2:2014 (allumette)
BS 7176:2007 Low Hazard
BS 5852:2006 Section 4 Ignition
Source 5
BS 7176:2007 Medium Hazard
Notez : Réaction au feu dépend de
la mousse utilisée.

ENTRETIEN

Essuyez avec une cretonne humide
et une solution savonneuse légère.

HALLINGDAL 65

DESIGN: NANNA DITZEL

PG 4

VERWENDUNGSBEREICH

Büros, Hotels
Objektbereich,
privaten Wohnbereich
Hohe Strapazierfähigkeit

BESCHREIBUNG

70 % Schurwolle
30 % Viskose
Breite 130 cm
Gewicht ca. 795 g/lfd.m
Materialgefärbt
In hellen Farben können
Fremdfasern vorkommen
Farbunterschiede
können vorkommen

PRÜFUNGSERGEBNISSE

Scheuerfestigkeit:
Ca. 100.000 Scheuerhübe
gemäss der Martindale
Methode EN ISO 12947
Lichtechtheit (ISO) 5–7
Pilling (EN ISO) 3
Reibechtheit (ISO)
trocken 4–5, nass 3–5
Flammschutz:
EN 1021–1/2
ignition source 0–1
BS 5852
ignition source 2–5
DIN 4102 B2
Önorm B1/Q1
NF D 60 013
UNI 9175, 11M
US Cal. Tech. Bull. 117
AS/NZS 1530.3
IMO A.652(16)
(Kopie von Prüfungs-
bericht verfügbar)

PFLEGE

Sehen Sie bitte die ISO
Pflegesymbole

APPLICATION

Offices, hotels,
institutions, domestic use
Great wearability

DESCRIPTION

70 % new wool
30 % viscose
Width 51 inches (130cm)
Weight app. 795 g/lin.m
Materialdyed
Foreign fibre may occur
in light colours
Colour differences
may occur

TESTS

Abrasion:
App. 100.000 rubs acc. to the
Martindale method EN ISO 12947
Lightfastness (ISO) 5–7
Pilling (EN ISO) 3
Fastness to rubbing (ISO)
dry 4–5, wet 3–5
Flame resistance:
EN 1021–1/2
ignition source 0–1
BS 5852
ignition source 2–5
DIN 4102 B2
Önorm B1/Q1
NF D 60 013
UNI 9175, 11M
US Cal. Tech. Bull. 117
AS/NZS 1530.3
IMO A.652(16)
(Copy of test report
available)

CARE

Please see the ISO symbols

DOMAINE D'UTILISATION

Tissu d'ameublement
pour aménagement
privé et public

DESCRIPTION

70 % laine vierge
30 % viscose
Largeur 130cm
Poids env. 795 g/m lg
Teinture en bourre
Dans les couleurs claires,
présence de fibres étrangères
Ecart des coloris possibles

TESTS

Résistance à l'abrasion:
Env. 100.000 révolutions
selon le procédé Martindale
EN ISO 12947
Résistance à la lumière
(ISO) 5–7
Boulochage (EN ISO) 3
Résistance au frottement
(ISO) sec 4–5, mouillé 3–5
Normes au feu:
EN 1021–1/2
ignition source 0–1
BS 5852
ignition source 2–5
DIN 4102 B2
Önorm B1/Q1
NF D 60 013
UNI 9175, 11M
US Cal. Tech. Bull. 117
AS/NZS 1530.3
IMO A.652(16)
(La copie du compte
rendu des tests est dis-
ponible sur demande

ENTRETIEN

Voir les symboles ISO



STEELCUT TRIO 3

DESIGN: FRANS DIJKMEIJER & GIULIO RIDOLFO
PG 4

VERWENDUNGSBEREICH

Büros, Hotels
Objectbereich,
privaten Wohnbereich
Hohe Strapazierfähigkeit

BESCHREIBUNG

90% Schurwolle, Kammgarn
10% Nylon
Breite 140cm
Gewicht ca. 770g/lfd.m
Garnegefärbt
In hellen Farben können
Fremdfasern vorkommen
Farbunterschiede
können vorkommen

PRÜFUNGSERGEBNISSE

Scheuerfestigkeit:
Ca. 80.000 Scheuerhübe
gemäss der Martindale
Methode EN ISO 12947
Lichtechtheit (ISO) 5–7
Pilling (EN ISO) 3–4
Reibechtheit (ISO)
trocken 4–5, nass 4
Flammschutz:
EN 1021–1/2
ignition source 0–1
BS 5852
ignition source 2–3
DIN 4102 B2
Önorm B1/Q1
NF D 60 013
UNI 9175, 1IM
US Cal. Tech. Bull. 117
IMO A.652(16)
Crib 5 bei schwerentflammbare
Ausrüstung
(Kopie von Prüfungs-
bericht verfügbar)

PFLEGE

Sehen Sie bitte die ISO
Pfllegesymbole



APPLICATION

Offices, hotels,
institutions, domestic use
Great wearability

DESCRIPTION

90% new wool, worsted
10% nylon
Width 55 inches (140cm)
Weight app. 770g/lin.m
Yarndyed
Foreign fibres may occur
in light colours
Colour differences
may occur

TESTS

Abrasion:
App. 80.000 rubs acc. to the
Martindale method EN ISO 12947
Lightfastness: (ISO) 5–7
Pilling (EN ISO) 3–4
Fastness to rubbing: (ISO)
dry 4–5, wet 4
Flame resistance:
EN 1021–1/2
ignition source 0–1
BS 5852
ignition source 2–3
DIN 4102 B2
Önorm B1/Q1
NF D 60 013
UNI 9175, 1IM
US Cal. Tech. Bull. 117
IMO A.652(16)
Crib 5 when flame protected
(Copy of test report
available)

CARE

Please see the ISO symbols

DOMAINE D'UTILISATION

Tissu d'ameublement
pour aménagement
privé et public
Grande résistance

DESCRIPTION

90% laine vierge, peigné
10% nylon
Largeur 140cm
Poids env. 770g/m lg
Teinture sur fil
Dans les couleurs claires,
présence de fibres étrangères
Ecart des coloris possibles

TESTS

Résistance à l'abrasion:
Env. 80.000 révolutions
selon le procédé Martindale
EN ISO 12947
Résistance à la lumière
(ISO) 5–7
Boulochage (EN ISO) 3–4
Résistance au frottement
(ISO) sec 4–5, mouillé 4
Normes au feu:
EN 1021–1/2
ignition source 0–1
BS 5852
ignition source 2–3
DIN 4102 B2
Önorm B1/Q1
NF D 60 013
UNI 9175, 1IM
US Cal. Tech. Bull. 117
IMO A.652(16)
Crib 5 après traitement
d'ignifugation et sur demande
(La copie du compte
rendu des tests est dis-
ponible sur demande

ENTRETIEN

Voir les symboles ISO

DIVINA MELANGE 2

DESIGN: FINN SKÖDT
PG 4

VERWENDUNGSBEREICH

Büros, Hotels
Objectbereich,
privaten Wohnbereich

BESCHREIBUNG

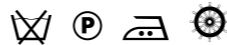
100% Schurwolle
Breite 150cm
Gewicht ca. 840g/lfd.m
Stückgefärbt
Farbunterschiede
können vorkommen

PRÜFUNGSERGEBNISSE

Scheuerfestigkeit:
Ca. 45.000 Scheuerhübe
gemäss der Martindale
Methode EN ISO 12947
Lichtechtheit (ISO) 5–7
Pilling (EN ISO) 3
Reibechtheit (ISO)
trocken 4–5, nass 4–5
Flammschutz:
DIN 4102 B2
Önorm B1/Q1
EN 1021–1/2
ignition source 0–1
BS 5852
ignition source 2–5
DIN 4102 B2
Önorm B1/Q1
NF D 60 013
UNI 9175, 1IM
US Cal. Tech. Bull. 117
AS/NZS 1530.3
IMO A.652(16)
(Kopie von Prüfungs-
bericht verfügbar)

PFLEGE

Sehen Sie bitte die ISO
Pfllegesymbole



APPLICATION

Offices, hotels,
institutions, domestic use

DESCRIPTION

100% new wool
Width 59 inches (150cm)
Weight app. 840g/lin.m
Piecedyed
Colour differences
may occur

TESTS

Abrasion:
App. 45.000 rubs acc. to the
Martindale method
EN ISO 12947
Lightfastness (ISO) 5–7
Pilling (EN ISO) 3
Fastness to rubbing (ISO)
dry 4–5, wet 4–5
Flame resistance:
EN 1021–1/2
ignition source 0–1
BS 5852
ignition source 2–5
DIN 4102 B2
Önorm B1/Q1
NF D 60 013
UNI 9175, 1IM
US Cal. Tech. Bull. 117
AS/NZS 1530.3
IMO A.652(16)
(Copy of test report
available)

CARE

Please see the ISO symbols

DOMAINE D'UTILISATION

Tissu d'ameublement
pour aménagement
privé et public

DESCRIPTION

100% laine vierge
Largeur 150cm
Poids env. 840g/m lg
Teinture à la pièce
Ecart des coloris possibles

TESTS

Résistance à l'abrasion:
Env. 45.000 révolutions
selon le procédé Martindale
EN ISO 12947
Résistance à la lumière
(ISO) 5–7
Boulochage (EN ISO) 3
Résistance au frottement
(ISO) sec 4–5, mouillé 4–5
Normes au feu:
EN 1021–1/2
ignition source 0–1
BS 5852
ignition source 2–5
DIN 4102 B2
Önorm B1/Q1
NF D 60 013
UNI 9175, 1IM
US Cal. Tech. Bull. 117
AS/NZS 1530.3
IMO A.652(16)
(La copie du compte
rendu des tests est dis-
ponible sur demande

ENTRETIEN

Voir les symboles ISO

DIVINA MD

PG 4

VERWENDUNGSBEREICH

Büros, Hotels, Objektbereich, privater Wohnbereich

BESCHREIBUNG

100% Schurwolle, Breite 150cm, Gewicht ca. 840g/dfd.m, stückgefärbt. In hellen Farben können Fremdfasern vorkommen. Farbunterschiede können vorkommen.

PRÜFUNGSERGEBNISSE

Scheuerfestigkeit: Ca. 45.000 Scheuertouren gemäss der Martindale Methode EN ISO 12947 Lichtechtheit (ISO) 5–7 Pilling (EN ISO) 3 Reibechtheit (ISO) trocken 4–5, nass 4–5 Flammenschutz: DIN 4102 B2 Önorm B1/Q1 EN 1021–1/2 ignition source 0–1 BS 5852 ignition source 2–5 NF D 60 013 UNI 9175, 1IM US Cal. Tech. Bull. 117 AS/NZS 1530.3 IMO A.652(16) (Kopie von Prüfungsbericht verfügbar)

PFLEGE

Sehen Sie bitte die ISO Pflegesymbole.

APPLICATION

Offices, hotels, institutions, domestic use

DESCRIPTION

100% new wool, width 59 inches (150cm), weight app. 840g/lin.m, piecedyed. Foreign fibres may occur in light colours. Colour differences may occur.

TESTS

Abrasion: App. 45.000 rubs acc. to the Martindale method EN ISO 12947 Lightfastness (ISO) 5–7 Pilling (EN ISO) 3 Fastness to rubbing (ISO) dry 4–5, wet 4–5 Flame resistance: EN 1021–1/2 ignition source 0–1 BS 5852 ignition source 2–5 DIN 4102 B2 Önorm B1/Q1 NF D 60 013 UNI 9175, 1IM US Cal. Tech. Bull. 117 AS/NZS 1530.3 IMO A.652(16) (Copy of test report available)

CARE

Please see the ISO symbols.

DOMAINE D'UTILISATION

Tissu d'ameublement pour aménagement privé et public

DESCRIPTION

100% laine vierge, largeur 150cm, poids env. 840g/m lg, teinture à la pièce. Dans les couleurs claires, présence de fibres étrangères. Ecart des coloris possibles.

TESTS

Résistance à l'abrasion: Env. 45.000 révolutions selon le procédé Martindale EN ISO 12947 Résistance à la lumière (ISO) 5–7 Boulochage (EN ISO) 3 Résistance au frottement (ISO) sec 4–5, mouillé 4–5 Normes au feu: NF D 60 013 EN 1021–1/2 ignition source 0–1 BS 5852 ignition source 2–5 DIN 4102 B2 Önorm B1/Q1 UNI 9175, 1IM US Cal. Tech. Bull. 117 AS/NZS 1530.3 IMO A.652(16) (La copie du compte rendu des tests est disponible sur demande)

ENTRETIEN

Voir les symboles ISO.

GREENWICH

DESIGN: PEARSONLLOYD, EXCLUSIVELY FOR BENE

PG 4

BESCHREIBUNG

90% Schurwolle/10% Nylon Zirpro Ausrüstung Kammgarn, Jacquard-Bindung Breite 140cm Gewicht ca. 550 g/dfd.m Rapport ca. 140cm Garnegefärbt Farbunterschiede können vorkommen

PRÜFUNGSERGEBNISSE

Scheuerfestigkeit: Ca. 80.000 Scheuertouren nach der Martindale Methode, EN ISO 12947 Pilling: Note 4–5 nach der Martindale Methode, EN ISO 12945 Lichtechtheit: Min. Note 5, ISO 1–8 Flammenschutz: EN 1021–1/2 BS 5852, ignition source 5 DIN 4102 B2 ÖNORM B1/Q1 NF D 60 013

PFLEGE

Chemische Reinigung oder Reinigung mit Schaummitteln

DESCRIPTION

Composition: 90% shorn wool/10% nylon Zirpro treatment Yarn type: worsted yarn, Weave: jacquard Width 140cm Weight approx. 550g/m Repeat approx. 140cm Colouring method: yarn colouring Colour differences may occur

TESTS

Resistance to abrasion: about 80,000 abrasion cycles according to Martindale, EN ISO 12947 Pilling: rating 4–5 according to Martindale, EN ISO 12945 Light fastness: min. 5, ISO 1–8 Flame retardance: EN 1021–1/2 BS 5852, ignition source 5 DIN 4102 B2 ÖNORM B1/Q1 NF D 60 013

CARE

Chemical cleaning or cleaning with foaming agents

DESCRIPTION

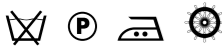
Composition : 90% laine vierge/10% nylon Traitement Zirpro Type de fil : fil peigné Armure : jacquard Largeur 140cm Poids env. 550g/m Rapport d'armure env. 140cm Méthode de teinture : fil teinté Ecart des coloris possibles

TESTS

Résistance à l'abrasion : env. 80.000 tours selon la méthode de Martindale, EN ISO 12947 Boulochage : note 4–5 selon la méthode de Martindale, EN ISO 12945 Résistance à la lumière : note min. 5, ISO 1–8 Inflammabilité : EN 1021–1/2 BS 5852, source d'ignition 5 DIN 4102 B2 ÖNORM B1/Q1 NF D 60 013

ENTRETIEN

Nettoyage chimique ou nettoyage à l'aide d'agents moussants



GRID 1+2

PG 4

VERWENDUNGSBEREICH

Büros, Hotels,
Objektbereich,
Privater Wohnbereich
Hohe Strapazierfähigkeit

BESCHREIBUNG

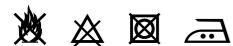
90% Schurwolle, Kammgarn
10% Nylon
Bindung: Jacquard
Breite: 140 cm
Gewicht: ca. 460g/lfd.m
Rapport: ca. 90 cm (Grid 1)
Rapport: ca. 80 cm (Grid 2)

PRÜFUNGSERGEBNISSE

Scheuerfestigkeit:
Ca. 60.000 Scheuertouren gemäß
der Martindale Methode EN ISO
12947
Pilling: (EN ISO) 3-4
Lichtechtheit: (ISO) 5-6 (Grid 1)
Lichtechtheit: (ISO) 6 (Grid 2)
Flammschutz:
EN 1021-1/2
Önorm B1/Q1
NF D 60 013
UNI 9175 1IM
US Cal. Tech. Bull. 117
IMO A.652(16)
Optional: Crib 5 bei schwerent-
flammbarer Ausrüstung

PFLEGE

Sehen Sie bitte die ISO
Pflegesymbole



APPLICATION

Office, hotels,
institutions, domestic use
Great wearability

DESCRIPTION

90% new wool, worsted
10% nylon
Binding: Jacquard
Width: 140 cm
Weight: app. 460g/lin.m
Repeat: app. 90 cm (Grid 1)
Repeat: app. 80 cm (Grid 2)

TESTS

Abrasion:
App. 60.000 rubs acc. to the
Martindale method, EN ISO 12947
Pilling: (EN ISO) 3-4
Lightfastness: (ISO) 5-6 (Grid 1)
Lightfastness: (ISO) 6 (Grid 2)
Flame resistance:
EN 1021-1/2
Önorm B1/Q1
NF D 60 013
UNI 9175 1IM
US Cal. Tech. Bull. 117
IMO A.652(16)
Optional: Crib 5 when flamepro-
tected

CARE

Please see the ISO symbols

DOMAINE D'UTILISATION

Tissu d'ameublement
pour aménagement
privé et public
Grande résistance

DESCRIPTION

90% laine vierge, peigné
10% nylon
Armure : Jacquard
Largeur : 140 cm
Poids : env. 460g/m lg
Rapport d'armure : env. 90 cm
(Grid 1)
Rapport d'armure: env. 80 cm
(Grid 2)

TESTS

Résistance à l'abrasion :
env. 60.000 tours selon la méthode
de Martindale EN ISO 12947
Boulochage : (EN ISO) 3-4
Résistance à la lumière : (ISO) 5-6
(Grid 1)
Résistance à la lumière : (ISO) 6
(Grid 2)
Normes au feu :
EN 1021-1/2
Önorm B1/Q1
NF D 60 013
UNI 9175 1IM
US Cal. Tech. Bull. 117
IMO A.652(16)
sur demande : Crib 5 après
traitement d'ignifugatio

ENTRETIEN

Voir les symbols ISO